

## **48v inverter can work continuously**





## Overview

---

As long as the inverter has a sufficient power supply and is not overloaded, it can operate continuously without any issues. However, it's essential to consider the inverter's efficiency and the battery's capacity when running it for extended periods. Do 48V power inverters work?

48V power inverters work perfectly in 48V solar systems, which are usually either small commercial or large residential. These inverters are typically paired with 48V PV modules and batteries of a comparable voltage.

Can a 48 volt inverter run a battery?

When you use a 48-Volts inverter, you can use regular and more flexible connectors to connect the inverter to the battery bank. This is so because the thinner the wire, the higher the resistance. And if your DC voltage is lower, you will pass more current through the wires, and they can get very hot, and you lose a lot of battery power.

How to maintain a solar inverter 48V?

Solar inverter 48V needs a cool dry place where sunlight doesn't reach it. The electronics inside it are very vulnerable, so learn to take good care of it. These simple measures will prolong the lifespan of your inverter: If you are looking for an inverter 48V, we have a variety of different models in our store.

Is a 24V inverter better than a 48V?

At 48V it drops to a more reasonable 66A. This is actually better than you might think because power loss is proportional to current squared, so if you use your existing wiring and connectors the loss in them will be 4 times higher. A 24V inverter might be a bit cheaper, but you should consider the cost of replacing your wiring and fuses etc.

Can a 48V inverter be rated at 2 kVA?

In this post I have explained a simple 48V inverter circuit which may be rated



at as high as 2 KVA. The entire design is configured around a single IC 4047 and a few power transistors. I am a big fan of u.i am a wisp. i need an inverter design with 48volt DC input and 230volt output supply and output power in the range up to 500w.

How much power does a 12V inverter use?

For example: If you're running a 1500W inverter on your 12v battery with 1000 watts of total AC load. So your inverter will be consuming 83 amps (amps = watts/battery volts) from the battery for which you'll need a very thick cable. using a thin cable in this scenario can damage the inverter or you'll not be able to run your load.



## 48v inverter can work continuously

---



### [How Long Will a Deep Cycle Battery Power an Inverter?](#)

Power inverters are typically rated by their continuous wattage, which indicates the maximum power they can supply consistently. For instance, an inverter ...

[Request Quote](#)

### [The Ultimate Guide to 48V Power Inverters: Efficiency, ...](#)

Extended Lifespan: Temperature reduction in 48V power inverters leads to a 20-30% longer lifespan that compensates replacement expense as well.

[Request Quote](#)



### [What size inverter can a 48V 100Ah LiFePO4 battery ...](#)

For mostly resistive loads (lights, electronics): If you primarily run devices without significant startup surges, an inverter with a continuous power rating close to ...

[Request Quote](#)



### [What Will An Inverter Run & For How Long? \(With Calculator\)](#)

So I'm gonna explain to you guys in simple words about what you can run on your any size inverter





and what are the key point to keep in mind. And also how long your inverter ...

[Request Quote](#)



### [How long can the Inverter 48v 220v 6000w work continuously?](#)

The continuous working time of the Inverter 48v 220v 6000w depends on multiple factors, including battery capacity, load power, inverter efficiency, and environmental conditions.

[Request Quote](#)



### [How Long Can an Inverter Run Continuously?](#)

As long as the inverter has a sufficient power supply and is not overloaded, it can operate continuously without any issues. However, it's essential to consider the inverter's ...

[Request Quote](#)



### **Does a Solar Inverter Run Continuously? What Happens If It ...**

Continuous operation of an inverter is theoretically possible, but regular maintenance and environmental control are crucial for long-term operation. Factors such as dust, humidity, and ...

[Request Quote](#)





## What is the Best Off-Grid Solar Inverter? A Comprehensive Guide

Power Output: 12000W continuous Features: 48V split phase, 24kW PV input. Why Choose It: Ideal for users with high power demands, this inverter supports larger solar arrays and offers ...

[Request Quote](#)



## [Can Solar Inverters Operate Continuously?](#)

Learn if solar inverters can run continuously 24/7, how it impacts their longevity and efficiency, and what factors influence their performance.

[Request Quote](#)

## Top 48V Inverters for RVs, Campers, and Off-Grid Setups (2025 ...

This article analyses the finest 48V inverters for RVs, campers, and off-grid setups in 2025, focussing on their features, possible technological capabilities, and practical uses.

[Request Quote](#)



## [General Power Inverters Troubleshooting Guide , Renogy US](#)

The Inverter can only power AC devices that are within its rated wattage, for instance a 1000W inverter can only power AC devices that do not exceed 1000W. Try connecting an AC device ...

[Request Quote](#)



### How Long Can an Inverter Run Continuously?

As long as the inverter has a sufficient power supply and is not overloaded, it can operate continuously without any issues. However, it's ...

[Request Quote](#)



### EG4® 12kPV All-In-One Hybrid Inverter

Easily integrate solar power into your current energy system or start a new one with the EG4 12kPV, our newest 48V split-phase hybrid inverter/charger. It ...

[Request Quote](#)



### How Long Will a Deep Cycle Battery Power an Inverter?

Power inverters are typically rated by their continuous wattage, which indicates the maximum power they can supply consistently. For instance, an inverter with a continuous wattage rating ...

[Request Quote](#)







### [Complete guide for 48V using EG4 18k](#)

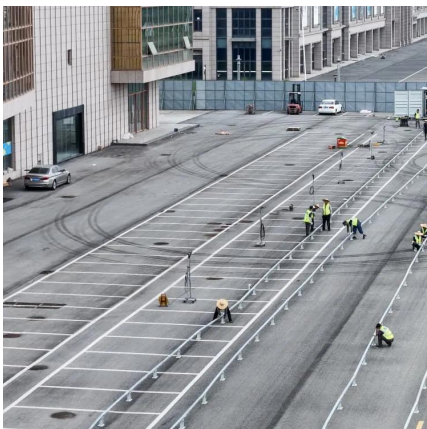
However, if the service is 100A the lines can be as 'small' as 2 AWG. There are a lot of options for the batteries, the EG4 LiFePower batteries can work but I prefer the EG4 LL ...

[Request Quote](#)

### [Renogy 48V 3500W Pure Sine Wave Power Inverter ...](#)

About this item ?STABLE AND PURE SINE WAVE CHARGING?3500W continuous, 7000W peak surge during load start-up and combines 80A ...

[Request Quote](#)



### [What is the Difference Between 24v and 48v Inverter?](#)

24 Volt inverters work at the standard household voltage of 120 volts, and 48V inverter can work at higher voltages in addition to running appliances that are capable of 24v.

[Request Quote](#)

### [Can I Use a 24V Inverter with 48V Battery Banks](#)

No, you should not use a 24V inverter with a 48V battery bank because the voltage mismatch can damage the inverter, pose safety hazards, and lead to inefficient power ...

[Request Quote](#)

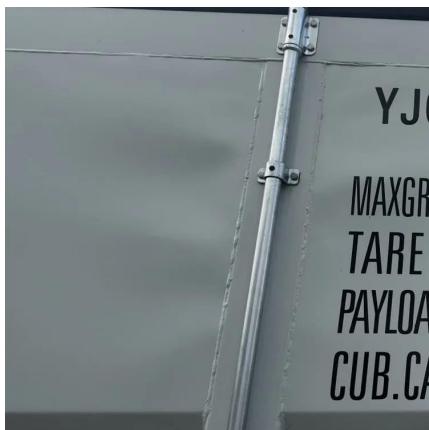




### [What Will An Inverter Run & For How Long? \(With Calculator\)](#)

I would say, IF you can keep the room at 15°C and add additional ventilators near the air inlet of the Quattro, it would probably work. With an air inlet of 15°C the inverter can ...

[Request Quote](#)



### **Quattro maximum continuous output power is actually only for 30 ...**

I would say, IF you can keep the room at 15°C and add additional ventilators near the air inlet of the Quattro, it would probably work. With an air inlet of 15°C the inverter can ...

[Request Quote](#)



### **Questions regarding inverters and batteries. , MyBroadband Forum**

6. How many amps should the batterie (s) be? (eg.75,100or 200amps) 7. Can I use a 51 v battery with a 5kwh 48v inverter? 8. Are there any Manufacturers that I should stay ...

[Request Quote](#)

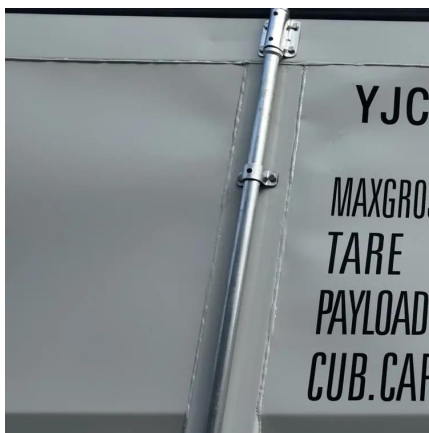




### [48V Solar Power System Setup Guide: Using Hybrid ...](#)

In this case, the 48V system can operate at this power using a hybrid inverter and LiFePO<sub>4</sub> battery bank. There would be minimal heat loss ...

[Request Quote](#)



### **What percentage of inverter capacity can you run continuously?**

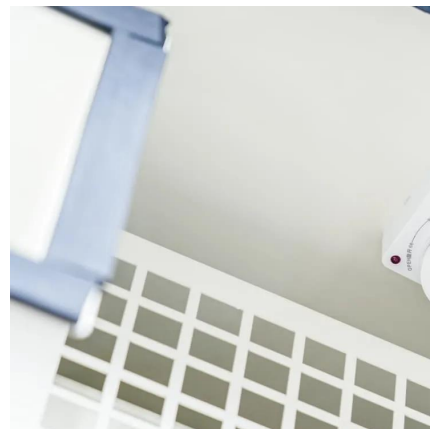
Like all electronics, the higher load or duty cycle will work but usually affects the lifespan of the device. That being said, I don't see a problem with running at 50%.

[Request Quote](#)

### [What Can a 4000 Watt Inverter Run - Complete Guide](#)

Discover what a 4000 watt pure sine wave inverter can run, including definitions, applicable equipment, appliance operating hours, ...

[Request Quote](#)



## **Contact Us**

---

For catalog requests, pricing, or partnerships, please visit:  
<https://espaciovet.es>