

## **5g base station circuit module**





## Overview

---

What is a 5G base station?

A 5G network base-station connects other wireless devices to a central hub. A look at 5G base-station architecture includes various equipment, such as a 5G base station power amplifier, which converts signals from RF antennas to BUU cabinets (baseband unit in wireless stations).

What is a 5G power amplifier?

One of the most instrumental pieces of RF hardware is the power amplifier (PA), a device whose importance has only increased with the proliferation of 5G. To help ease the challenges of designing RF PAs for 5G, power amplifier modules (PAMs) have become an important tool in recent years.

How can a Pam be used in a 5G base station?

For example, in the application of a 5G base station, a PAM might integrate the driver amplifier and final stage amplifier into a single package as opposed to implementing them as discrete circuit blocks. By integrating the entire PA system onto a single module, we can achieve many important results (Figure 1).

How does 5G LTE user equipment work?

For 5G LTE user equipment (UE) there is an increase from 20 MHz to 40 MHz/60 MHz for the uplink modulation bandwidth in low/mid bands as well an increase of the output antenna power for HPUE to 26 dBm and therefore an increase in the PA output power.

Will RF front end architectures be part of 5G smartphones?

This paper presents RF front end architectures which will be part of 5G smartphones together with circuit and measurement details.

Why are power amplifiers so important in 5G?



Yet, these radical performance improvements generate increased strain on and tighter requirements for the underlying radio frequency (RF) hardware. One of the most instrumental pieces of RF hardware is the power amplifier (PA), a device whose importance has only increased with the proliferation of 5G.



## 5g base station circuit module

---



### 5G Power Amplifier Module (PAM) . Silizium Circuits

Supports n78 band (3.3 GHz to 3.8 GHz), a cornerstone of 5G deployments offering an ideal balance of coverage and capacity for mobile networks worldwide. Designed for macro base ...

[Request Quote](#)

### **Design of highly efficient filtering power amplifier with a wideband**

This, in turn, has presented significant challenges in the realm of RF/microwave power amplifier (PA) design. Particularly, the imperative for extremely high power-efficient and ...

[Request Quote](#)



### **Antenna-in-package design considerations for millimeter-wave 5G**

The demand for high-speed data has led to the adoption of millimeter-wave (mm-wave) frequency bands for cellular applications, but the widespread realization of 5G mm ...

[Request Quote](#)

### Power Amplifier Modules and Their Role in 5G Design ...

To help ease the challenges of designing RF PAs for 5G, power amplifier modules (PAMs) have



become an important tool in recent years. In ...

[Request Quote](#)



### [Power Amplifier Modules and Their Role in 5G Design](#)

To help ease the challenges of designing RF PAs for 5G, power amplifier modules (PAMs) have become an important tool in recent years. In this post, we'll talk about PAs, their ...

[Request Quote](#)



### [Selecting the Right Supplies for Powering 5G Base Stations](#)

These tools simplify the task of selecting the right power management solutions for these devices and, thereby, provide an optimal power solution for 5G base stations components.

[Request Quote](#)



### **A Fully Integrated 3.5GHz Single Chip GaN Doherty PA for ...**

A popular method for obtaining high power-added efficiency (PAE) at back-off from compression is the Doherty Amplifier. A good summary of the various implementations of the Doherty amplifier ...

[Request Quote](#)



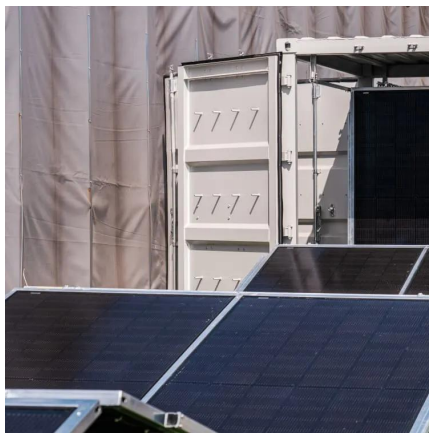
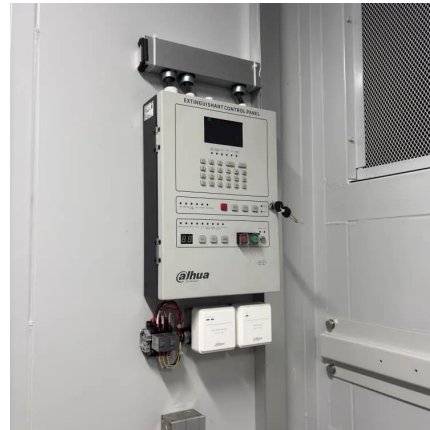




### [Bias control of power amplifiers in 5G base stations](#)

Modern power amplifiers in base stations are biased using a separate bias controller to maintain their optimal performance as a function of ...

[Request Quote](#)



### [How to safeguard cellular base stations from five ...](#)

Circuit-protection components such as fuses and TVS diodes protect power and data circuits from damage. Here's where and how to insert ...

[Request Quote](#)

### [PCB & PCBA Solutions for 5G Networks by Highleap ...](#)

Fiber optic systems are integral to 5G networks, enabling high-speed data transmission between base stations and the core network. Fiber Optic ...

[Request Quote](#)



### [Mitsubishi Electric Develops New Technology to Realize ...](#)

Key Features High-density mounting technology to realize compact (6mmx10mm) power amplifier module for more widely deployable 5G base-stations In 4G base-stations, which do not use ...

[Request Quote](#)



### [10W Class, Wideband GaN Power Amplifier Module for 5G ...](#)

In this article, we discuss the 10W class, wideband GaN power amplifier module for 5G base stations which covers almost all the bandwidths of 5G frequencies in the 3 - 4 GHz band.

[Request Quote](#)



### **Mitsubishi Electric to Ship Samples of GaN Power Amplifier ...**

-Mitsubishi Electric's original high-density packaging technique allows the realization of a Doherty-circuit-based power amplifier module that is indispensable to 5G base station power amplifiers.

[Request Quote](#)



### **RF-GaN PA Module**

INuvoton RF-GaN Power Amplifier (PA) Module is a fully integrated RF power amplifier module with driver amplifier, Doherty amplifier, and gate bias circuit for 5G NR massive MIMO and ...

[Request Quote](#)





## **A Wideband Sub-6-GHz Transceiver Front End for 5G Base Stations ...**

A fully integrated, non-frequency-translating, low-impedance transceiver (TRX) front end for cellular base stations (BSs) covering 1.25-5.5 GHz is presented.

[Request Quote](#)

## [Power Amplifier Modules and Their Role in 5G Design](#)

For example, in the application of a 5G base station, a PAM might integrate the driver amplifier and final stage amplifier into a single package as ...

[Request Quote](#)



## [Selecting the Right Supplies for Powering 5G Base Stations](#)

These tools simplify the task of selecting the right power management solutions for these devices and, thereby, provide an optimal power solution for 5G base stations components.

[Request Quote](#)



## [Antenna-in-Package \(AiP\) Design and Integration for ...](#)

This paper reviews two different aspects of mmWave antenna module packaging and integration for base station and user equipment

...

[Request Quote](#)





### [A major change in smartphone RF filters and front ...](#)

The coming carrier aggregation and multiple-in-multiple-out (MIMO) designs will be needed to meet the needs of both interim LTE-Advanced and ...

[Request Quote](#)



### [Choose a 5G base station's PA bias control circuit](#)

When designing a PA bias circuit, you can use current sensing with open-loop control or temperature feedback for closed-loop control. Each has advantages and ...

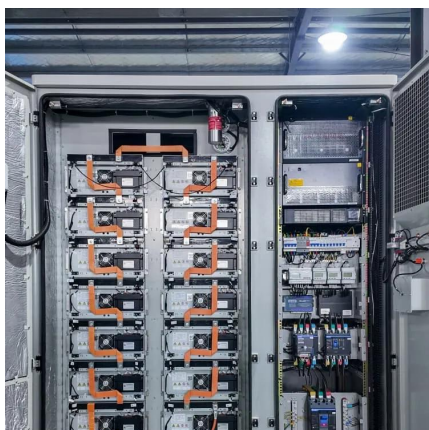
[Request Quote](#)



### [5G RAN Architecture: Nodes And Components](#)

5G RAN Architecture The 5G RAN architecture is composed of multiple nodes and components that work together to provide seamless connectivity to users. These nodes ...

[Request Quote](#)

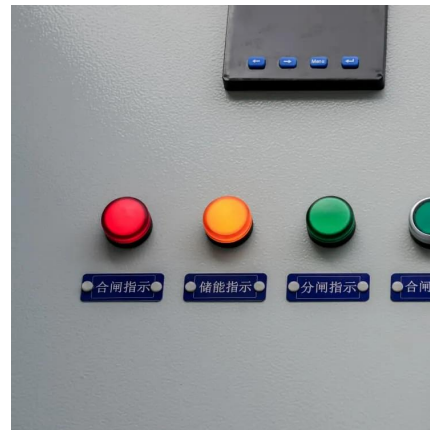




## [Mitsubishi Develops tiny GaN Module for 5G basestations](#)

The module, which uses a minimum number of chip components in the matching circuit to control high-quality signal output, is expected to help realise 5G base-stations that ...

[Request Quote](#)



## [Quick guide: components for 5G base stations and antennas](#)

Check out our 2021 Quick Guide: components for 5G base stations and antennas. Download or read online, get free CADs and ask us for free samples

[Request Quote](#)

## [Choose a 5G base station's PA bias control circuit](#)

When designing a PA bias circuit, you can use current sensing with open-loop control or temperature feedback for closed-loop control. Each has ...

[Request Quote](#)



## [A Wideband Sub-6-GHz Transceiver Front End for 5G Base ...](#)

A fully integrated, non-frequency-translating, low-impedance transceiver (TRX) front end for cellular base stations (BSs) covering 1.25-5.5 GHz is presented.

[Request Quote](#)



### [News & Events , Mitsubishi Electric Research Laboratories](#)

Description: Mitsubishi Electric Corporation announced today its development of a new technology to realize a gallium nitride (GaN) power amplifier module for 5G base-stations ...

[Request Quote](#)



### [RF Front End Module Architectures for 5G](#)

This paper presents RF front end architectures which will be part of 5G smartphones together with circuit and measurement details.

[Request Quote](#)



## **Contact Us**

For catalog requests, pricing, or partnerships, please visit:  
<https://espaciovet.es>