

Auxiliary inverter rated power





Overview

How do I choose a good inverter?

Choose inverters with clear power factor information and look at the kW output, especially in hybrid or off-grid systems. Always design your load around the kW capacity, not just kVA. Knowing the difference between kW and kVA prevents common inverter sizing mistakes.

Do traction inverters need a SiC MOSFET?

Proper design of a low-power auxiliary power supply within traction inverters is critical for ensuring the functional safety of EVs. Learn how SiC MOSFETs can play a critical role in this effort. This article is published by EEPower as part of an exclusive digital content partnership with Bodo's Power Systems.

What are inverter specifications?

Specifications provide the values of operating parameters for a given inverter. Common specifications are discussed below. Some or all of the specifications usually appear on the inverter data sheet. Maximum AC output power This is the maximum power the inverter can supply to a load on a steady basis at a specified output voltage.

How much power does a commercial inverter provide?

Small commercial inverters are in the 13 kW to 15 kW range and can include three-phase power. Large commercial inverters Large commercial inverters are in the 60 kW to 100 kW range. Inverters can be combined to provide up to or above 1 MW (1,000 kW) of three-phase power.

How do you classify an inverter based on its power output?

Using the CEC efficiency, the input power to the inverter must be $P_{IN} = P_{OUT} / \text{CEC Efficiency} = 3,300 \text{ W} / 0.945 = 3,492 \text{ W}$ Inverters can be classed according to their power output. The following information is not set in stone, but it gives you an idea of the classifications and general power ranges



associated with them.

Is a 10 kVA inverter enough?

For example, an inverter rated at 10 kVA with a power factor of 0.8 can only deliver 8 kW of real power. That means if your total appliance load is 10 kW, this inverter will not be enough.



Auxiliary inverter rated power



[Inverter Specifications and Data Sheet](#)

The article provides an overview of inverter functions, key specifications, and common features found in inverter systems, along with an example of power calculations and inverter ...

[Request Quote](#)

[Auxiliary power supply|Transportation Systems ...](#)

The auxiliary power supply (static inverter) converts the power for interior light, displays, air conditioning, etc. Even though there is a propulsion inverter, the static inverter is installed in ...

[Request Quote](#)



[45W Auxiliary Power Supply for 800V Traction Inverters ...](#)

Supports a broad input range of 40V to 1000V, making it adaptable for various EV, HEV and PHEV traction inverter architectures while allowing scalability to higher voltages and power ...

[Request Quote](#)

[What is auxiliary supply & auxiliary voltages](#)

What is auxiliary supply & auxiliary voltages ?Which circuit are you referring to. Usually, an



auxiliary supply is a power supply that provides an auxiliary voltage. An example ...

[Request Quote](#)



[Auxiliary power supply|Transportation Systems ...](#)

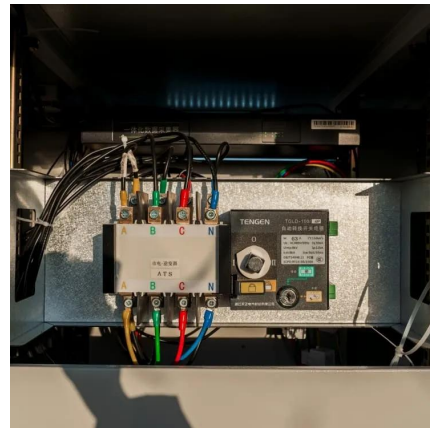
The auxiliary power supply (static inverter) converts the power for interior light, displays, air conditioning, etc. Even though there is a propulsion inverter, the ...

[Request Quote](#)

[Auxiliary Inverter DCU 15 / 7.5 , Accelera](#)

Contact us today to explore how our portfolio of auxiliary inverters- as single units or integrated system and comprehensive software suite can further optimize your vehicles energy efficiency.

[Request Quote](#)



[Auxiliary Inverters for Electric Municipal Vehicles](#)

Below are some key considerations when selecting auxiliary inverters for these applications: At the end of the day, this undoubtedly should ...

[Request Quote](#)

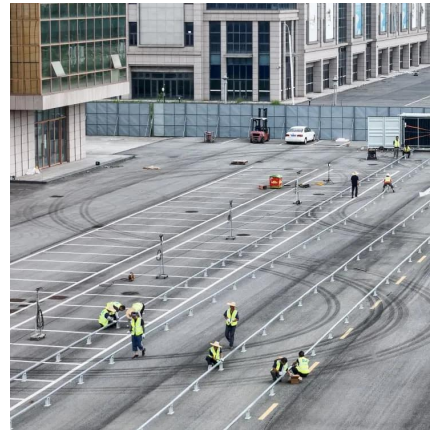




PCSK & Multi PCSK

Discover our products at Power Electronics PCSK & Multi PCSK OUR PCSK are battery inverters for utility-scale applications. This product provides advanced ...

[Request Quote](#)



[Auxiliary Inverters for Electric Municipal Vehicles](#)

Below are some key considerations when selecting auxiliary inverters for these applications: At the end of the day, this undoubtedly should be the #1 ...

[Request Quote](#)



Traction Inverter Functional Safety Design with SiC Auxiliary Power

Proper design of a low-power auxiliary power supply within traction inverters is critical for ensuring the functional safety of EVs. Learn how SiC MOSFETs can play a critical ...

[Request Quote](#)



Auxiliary Power Converters

Auxiliary converter plays a crucial role in managing and supplying electrical power to various onboard systems and subsystems that require low-voltage AC or ...

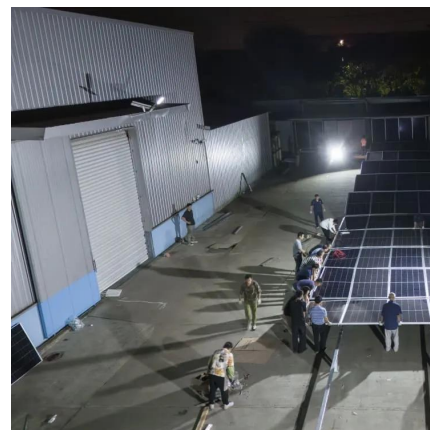
[Request Quote](#)



[EV/HEV Auxiliary Inverter , OEM / ODM Manufacturer](#)

4-in-1 EV / HEV Auxiliary Inverter Our 4-in-1 Auxiliary Inverter comprises a DC/DC converter, two DC/AC inverters, and a high-voltage power distribution unit ...

[Request Quote](#)



[How to Install a Power Inverter? - Powerinverter](#)

The auxiliary battery fuse protects the wires to the inverter and the wires to the alternator. Another fuse holder must be mounted at the engine battery if a ...

[Request Quote](#)

[Inverter Specifications and Data Sheet](#)

Choose inverters with clear power factor information and look at the kW output, especially in hybrid or off-grid systems. Always design your load around the ...

[Request Quote](#)





What is Auxiliary Power?

The auxiliary power supply converts the electricity used for air conditioning, interior lighting, displays, etc. The static inverter is installed to provide power that has low voltage and ...

[Request Quote](#)

[\(PDF\) Simulation Research on Auxiliary Power Supply ...](#)

According to the topology of the EMU real auxiliary power supply system, the whole simulation system including the auxiliary converter, ...

[Request Quote](#)



[Traction Inverter Functional Safety Design with SiC ...](#)

Proper design of a low-power auxiliary power supply within traction inverters is critical for ensuring the functional safety of EVs. Learn how SiC ...

[Request Quote](#)



What is Auxiliary Power?

The auxiliary power supply converts the electricity used for air conditioning, interior lighting, displays, etc. The static inverter is installed to ...

[Request Quote](#)



T6 Auxiliary Inverter

The COMBIVERT T6 is a modular and scalable multi-inverter system, specially designed for auxiliary components in commercial vehicle applications. It can be configured with up to 6 ...

[Request Quote](#)



45W Auxiliary Power Supply for 800V Traction ...

Supports a broad input range of 40V to 1000V, making it adaptable for various EV, HEV and PHEV traction inverter architectures while allowing scalability to ...

[Request Quote](#)



Switching and Protection solutions for 800VAC Recombiners ...

What is an AC Recombiner? If you want to connect several string inverters in parallel prior to connecting to the MV/LV transformer then you need an AC Recombiner. AC Recombiners are ...

[Request Quote](#)

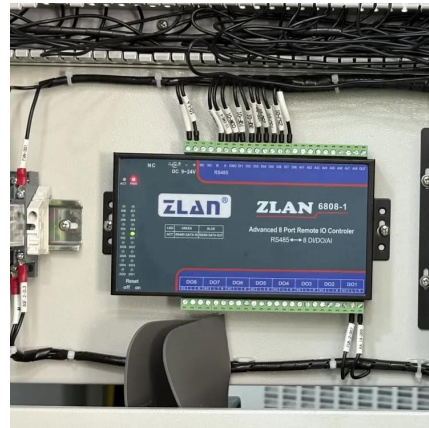




[Understanding Inverter Power Ratings: kW vs kVA Explained](#)

Choose inverters with clear power factor information and look at the kW output, especially in hybrid or off-grid systems. Always design your load around the kW capacity, not just kVA.

[Request Quote](#)



[Considerations for auxiliary flyback power supplies \(Rev. A\)](#)

In this article, the basic functionality of an industrial application is broken down, the importance of the auxiliary power supply to this functionality, and how the new UCC28750 flyback controller ...

[Request Quote](#)



Auxiliary Power Supply for Industrial and Solar Applications ...

This document is for the users of MSC750SMA170B who want to create low-cost and high-performance of-line Switch Mode Power Supply (SMPS) for auxiliary power supply. This ...

[Request Quote](#)



T6 Auxiliary Inverter for Commercial Vehicle & Mobile Machinery

Customized Auxiliary Inverters The T6 Auxiliary Inverter is a purpose-built solution designed to meet the stringent standards and requirements of automotive applications. This ...

[Request Quote](#)



[Auxiliary Power Supply System with Parallel ...](#)

This research proposes a roof-mounted auxiliary power supply (APS) system for 600 VDC low-floor light rail vehicles (LRVs). The proposed ...

[Request Quote](#)



[18000 BTU AC \(Inverter\) , Asters Maldives](#)

Aux - Air Conditioner (18000BTU) Inverter - Wi-Fi Ready Brand: Aux Model: MASDC18QGR1-Q- Smart Capacity: 18000BTU Color: White Cooling: Rated Capacity: 5300W (1300 - 5300W) ...

[Request Quote](#)

[Switching & Protection solutions for Power Conversion ...](#)

What is a Power Conversion System (PCS)? If you want your Utility scale BESS (battery energy storage system) installation to function efficiently, you need a Power Conversion System to ...

[Request Quote](#)





Contact Us

For catalog requests, pricing, or partnerships, please visit:
<https://espaciovet.es>