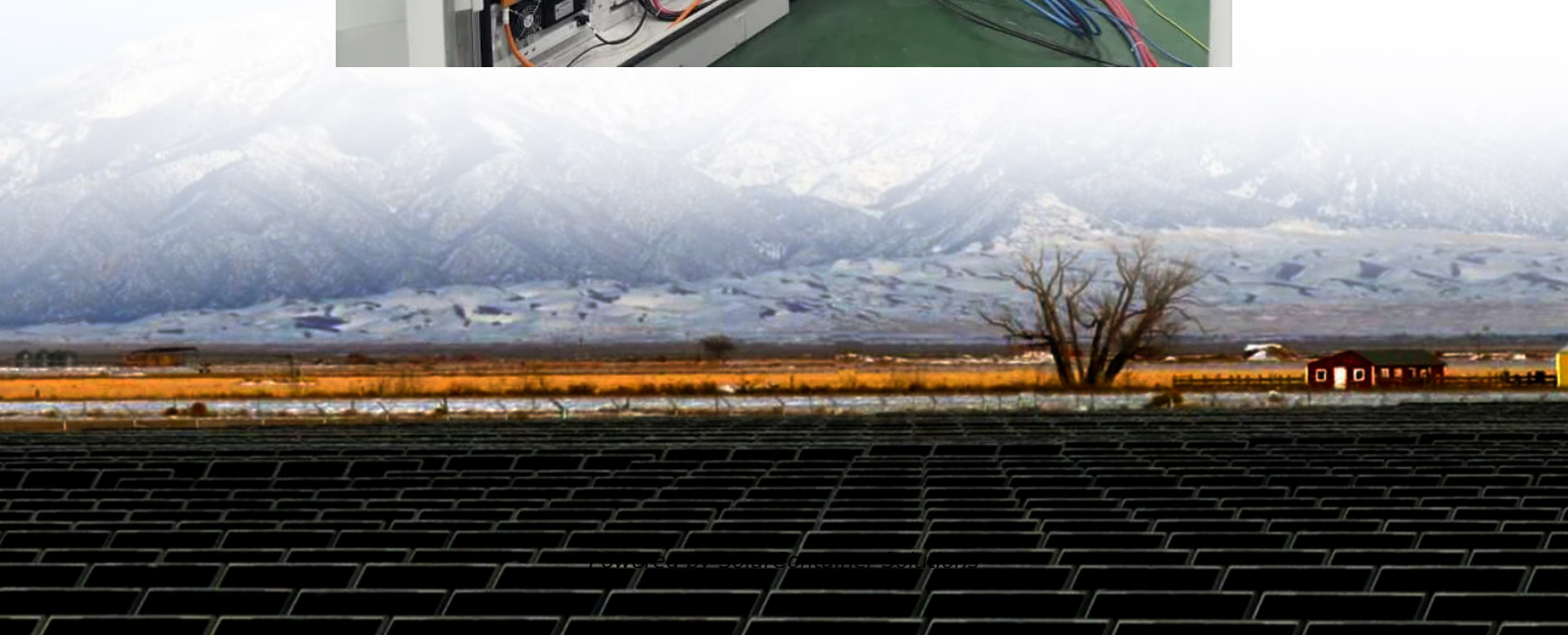


Do outdoor base stations use batteries





Overview

What is a base battery system?

The Base battery system is built for performance and reliability. It combines a high-capacity lithium iron battery with intelligent software to optimize energy use. The Base battery system has three main components: the battery pack, inverter, and hub. The long white unit is the battery pack. We mount the battery pack on the ground.

How does a base battery work?

This process is called grid-balancing. Base batteries deploy energy to the grid faster than any other service, which is how Base is able to recoup the cost of the battery equipment and keep prices low for homeowners. The charge level of your Base battery will naturally fluctuate over time, rising and falling throughout a multi-day cycle.

Do base batteries run in two directions?

Base batteries run in two directions, which is how Base is able to keep costs low for homeowners. The batteries charge during off-peak hours, like midday and late at night, when energy is more available and demand is low.

What does a base hub do during a power outage?

During a power outage, the Base hub disconnects your home from the grid. This ensures that the stored energy in your battery powers only your household. Learn more about the components of your battery system below, in the section "What's inside your Base battery system." The average power outage in Texas lasts 2.5 hours.

How long does a single unit Battery last?

At low energy use, the single-unit Base battery can protect an average household for 20 hours. At moderate energy use, backup duration is typically 12-14 hours. You can extend this time by using fewer power-hungry



appliances. For more specific information based on your battery configuration, check our specs [here](#).



Do outdoor base stations use batteries



[11 Pros and Cons of Portable Power Stations That ...](#)

Portable power stations are compact battery-powered devices that store electrical energy for use anywhere. These versatile units contain ...

[Request Quote](#)

[What Powers Telecom Base Stations During Outages?](#)

Telecom batteries for base stations are backup power systems using valve-regulated lead-acid (VRLA) or lithium-ion batteries. They ensure uninterrupted connectivity ...

[Request Quote](#)



[What are base station energy storage batteries used for?](#)

Innovations in battery technologies, such as lithium-sulfur or solid-state batteries, promise higher energy densities and improved lifespan, thereby enhancing the operational ...

[Request Quote](#)

[AcuRite Iris® \(5-in-1\) Draining Batteries](#)

If your AcuRite Iris® (5-in-1) sensor is losing connection to the display unit and/or AcuRite Access®, the low battery icon is often present on



the display, or the ...

[Request Quote](#)



[Setting Up Your Ring Alarm Base Station](#)

How does battery backup work? When your Ring Alarm loses power, the internal rechargeable battery will keep your Ring Alarm Base Station online for up to 24 hours. You may have some ...

[Request Quote](#)



[What are base station energy storage batteries used for?](#)

Innovations in battery technologies, such as lithium-sulfur or solid-state batteries, promise higher energy densities and improved lifespan, ...

[Request Quote](#)



Outdoor cam . Why a base station?

The base station aids in making the battery last longer. More of the tasks are done on the base station to save battery life.

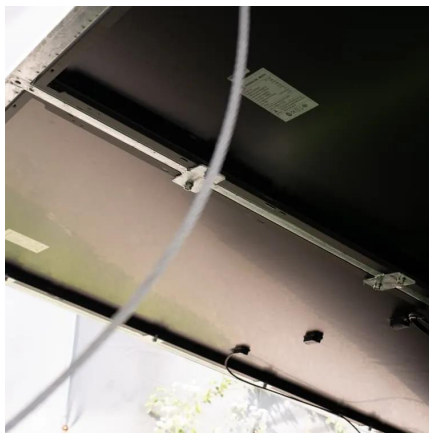
[Request Quote](#)



[Understanding Wyze Outdoor Camera: Do You Need a Base ...](#)

Setting up your Wyze Outdoor Camera is a breeze, particularly since it does not necessitate a base station. Follow these steps to get started: Unbox and Install: Remove the ...

[Request Quote](#)



Understanding Wyze Outdoor Camera: Do You Need a Base Station?

Setting up your Wyze Outdoor Camera is a breeze, particularly since it does not necessitate a base station. Follow these steps to get started: Unbox and Install: Remove the ...

[Request Quote](#)

[How do you all power your GPS base stations? : r/Surveying](#)

We use the smaller lawn mower batteries that just have a case that has a built in adapter for the Leica spider cables. I usually get a couple weeks off of it just using the internal radio as I'm in ...

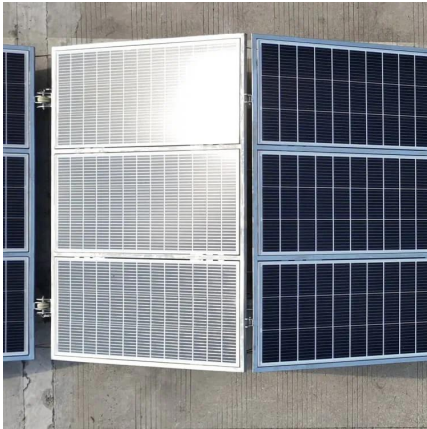
[Request Quote](#)



[How the Base battery works: A complete guide to grid ...](#)

Base's battery lifespan is 10-15 years, comparable with other systems. We have also built our batteries to handle extreme Texas weather, making them a ...

[Request Quote](#)



Why require base stations

There are different reasons. Sometimes a dedicated base station helps preserve the battery life significantly longer with improved stability vs constantly maintaining a Wi-Fi ...

[Request Quote](#)



[How do you all power your GPS base stations? : r/Surveying](#)

We use the smaller lawn mover batteries that just have a case that has a built in adapter for the Leica spider cables. I usually get a couple weeks off of it just using the internal radio as I'm in ...

[Request Quote](#)

11 Pros and Cons of Portable Power Stations That Power Off ...

Portable power stations are compact battery-powered devices that store electrical energy for use anywhere. These versatile units contain rechargeable lithium-ion batteries ...

[Request Quote](#)





[Beginner's Guide to Portable Power Stations](#)

Lead-acid portable power stations use a traditional, decades-old battery technology. That means they're reliable, inexpensive, and work well in most environments.

[Request Quote](#)

[Which Battery Is Best for Outdoor Power Stations?](#)

Among them, ICR 18650 batteries and 21700 lithium batteries stand out as popular choices for outdoor power stations due to their high efficiency and adaptability.

[Request Quote](#)



[Roku Outdoor Camera \(No Base\) for Home Security](#)

About this item See more of your outdoor spaces: Roku Outdoor Camera Without Base Station is a great addition to your current Roku Outdoor Camera setup. ...

[Request Quote](#)

[How the Base battery works: A complete guide to grid ...](#)

Base's battery lifespan is 10-15 years, comparable with other systems. We have also built our batteries to handle extreme Texas weather, making them a reliable long-term energy solution.

[Request Quote](#)



Power Base Station

Base station power refers to the output power level of base stations, which is defined by specific maximum limits (24 dBm for Local Area base stations and 20 dBm for Home base stations) ...

[Request Quote](#)



[Is It Possible to Use the Eufy Camera Without Homebase?](#)

You can use Wi-Fi and Ethernet cable to connect your HomeBase unit to the Internet. Your Eufy camera will continue to record as long as it is connected to the HomeBase ...

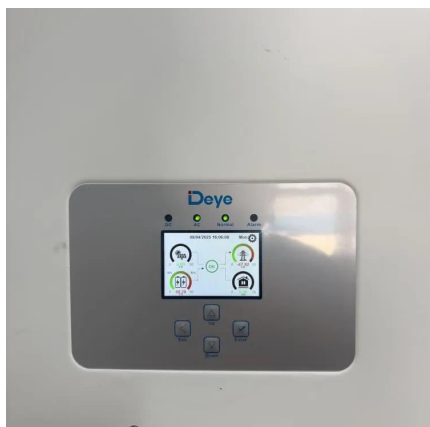
[Request Quote](#)



[What is a base station energy storage battery?](#)

Base station batteries are often coupled with various energy sources, particularly renewables such as solar panels. This synergy not only ...

[Request Quote](#)

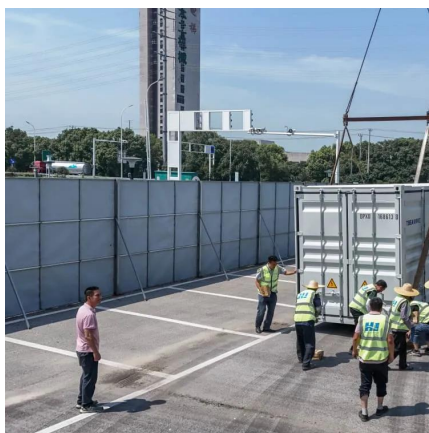
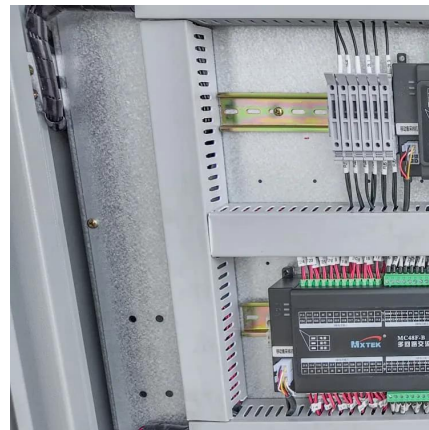




[What is a base station energy storage battery? , NenPower](#)

Base station batteries are often coupled with various energy sources, particularly renewables such as solar panels. This synergy not only addresses the immediate energy ...

[Request Quote](#)



[Roku wireless outdoor camera work without base](#)

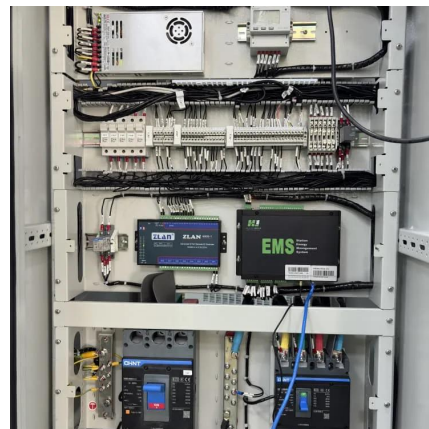
Your outdoor camera includes everything you need to get started: a base station, power adaptor, USB cable, Ethernet cable, and mounting hardware. They work together, and you cannot ...

[Request Quote](#)

[How to use Wyze Outdoor Cam without a Base Station?](#)

Why do you have an outdoor cam without a Base station? Even if you found one the cam would likely be useless, as it sounds like it was probably never released from the original ...

[Request Quote](#)



Outdoor cam, basr station

Yes, the base station should work with new standalone cameras. Just delete the old cameras from the base station (WARNING: This will BRICK ...

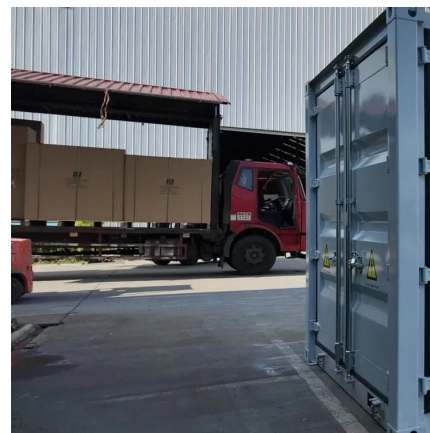
[Request Quote](#)



23 Ring Base Station Common Questions (Solved)

No. The Ring base station is not powered over ethernet (PoE). These devices have their backup batteries and are charged through a barrel ...

[Request Quote](#)



About the Wyze Base Station

Unlike other Wyze cameras, your Wyze Cam Outdoor must be connected to a Base Station to work. This article explains why. [More Reliable Range Without a Wyze Base ...](#)

[Request Quote](#)

SimpliSafe Home Security FAQs

SimpliSafe creates its own home security equipment and offers a base station and keypads, motion sensors, entry sensors, smoke detectors, ...

[Request Quote](#)





Contact Us

For catalog requests, pricing, or partnerships, please visit:
<https://espaciovet.es>