

Does the power base station equipment have batteries





Overview

What are battery storage power stations?

Battery storage power stations are usually composed of batteries, power conversion systems (inverters), control systems and monitoring equipment. There are a variety of battery types used, including lithium-ion, lead-acid, flow cell batteries, and others, depending on factors such as energy density, cycle life, and cost.

What is a base battery system?

The Base battery system is built for performance and reliability. It combines a high-capacity lithium iron battery with intelligent software to optimize energy use. The Base battery system has three main components: the battery pack, inverter, and hub. The long white unit is the battery pack. We mount the battery pack on the ground.

What types of batteries are used in a battery storage power station?

There are a variety of battery types used, including lithium-ion, lead-acid, flow cell batteries, and others, depending on factors such as energy density, cycle life, and cost. Battery storage power stations require complete functions to ensure efficient operation and management.

How does a base battery work?

This process is called grid-balancing. Base batteries deploy energy to the grid faster than any other service, which is how Base is able to recoup the cost of the battery equipment and keep prices low for homeowners. The charge level of your Base battery will naturally fluctuate over time, rising and falling throughout a multi-day cycle.

Why do battery storage power stations need a data collection system?

Battery storage power stations require complete functions to ensure efficient operation and management. First, they need strong data collection



capabilities to collect important information such as voltage, current, temperature, SOC, etc.

What is a power base?

A power base is where someone gets their power from. Examples include legitimate power, reward power, coercive power, referent power, and expert power. Legitimate power bases include those who are appointed or chosen and have a sanctioned right to require and demand compliance. Reward power bases offer rewards to gain compliance.



Does the power base station equipment have batteries



[Do I ground a mobile unit when used as a base station.](#)

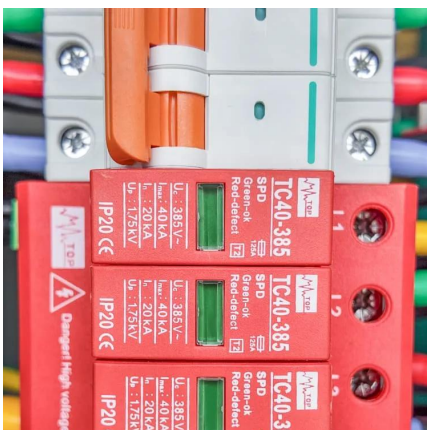
When i connect it to a DC power supply in the shack, does the mobile unit need to be grounded? From what i can see, the chassis does not have a ground lug on it. Also, the DC power supply ...

[Request Quote](#)

[How about base station energy storage batteries , NenPower](#)

Base stations primarily utilize lithium-ion and lead-acid batteries. Lithium-ion batteries are favored for their higher energy density, longer lifespan, and faster charging ...

[Request Quote](#)



How EV Charging Stations Work

Electric vehicles (EVs) have emerged as a promising alternative to cars running on fossil fuels. Part of EV adoption is the emergence of battery "gas stations" ...

[Request Quote](#)

[How the Base battery works: A complete guide to grid ...](#)

This guide covers everything you need to know about how your Base battery operates, protects



your home, and supports the power grid. You'll also find answers to common battery myths ...

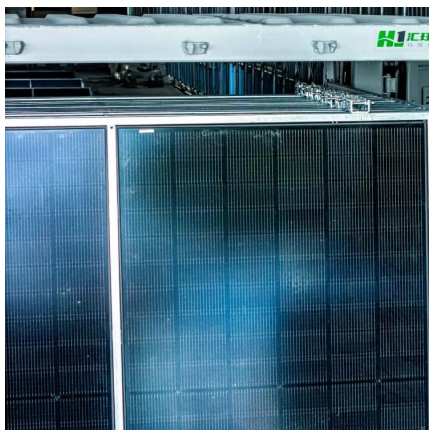
[Request Quote](#)



[Comprehensive Guide to Telecom Batteries](#)

In data centers, telecom batteries provide backup power to servers and networking equipment. They ensure data integrity and availability during power outages. 2.2 Cell Towers ...

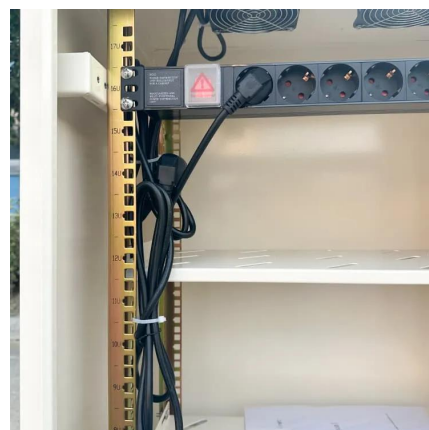
[Request Quote](#)



What equipment does the energy storage power station cabinet ...

Energy storage power station cabinets utilize various battery technologies, each with unique characteristics and applications. Lithium-ion batteries are perhaps the most ...

[Request Quote](#)



[Battery storage power station - a comprehensive guide](#)

Battery storage power stations store electrical energy in various types of batteries such as lithium-ion, lead-acid, and flow cell batteries. These facilities require efficient operation and ...

[Request Quote](#)





[Batteries for Ham Radio Applications](#)

Conclusions Consider what you need your battery to do and chose the type and capacity accordingly Use the recharger that the manufacturer recommends. You can avoid damaging ...

[Request Quote](#)



[Where can the battery system be installed? What are the ...](#)

That means, for one battery system, you must have 9 feet of total working space. For a two battery system, you must have 15 feet of total working space. Should be installed within 20 ...

[Request Quote](#)



What hardware does Base use? Do you have spec sheets for the ...

Base offers a 20-50 kWh capacity battery system with an 11 kW inverter, making it one of the largest home backup systems available. It is built to back up your entire home, covering more ...

[Request Quote](#)



[How the Base battery works: A complete guide to grid ...](#)

This guide covers everything you need to know about how your Base battery operates, protects your home, and supports the power grid. You'll also find ...

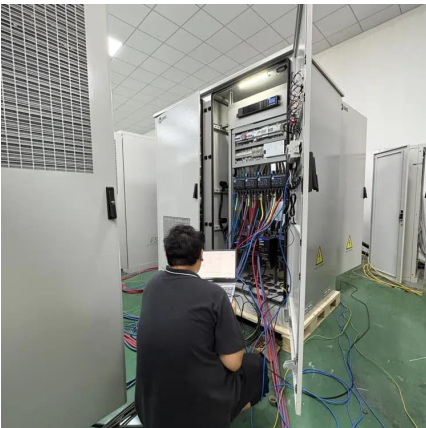
[Request Quote](#)



EVE 280AH 3.2V Battery in a Communication Base Station Backup Power ...

Standard Charge and Discharge Rates: The 1C charge and discharge rates have been well - suited for the base station's power requirements. The batteries can charge at a rate that does ...

[Request Quote](#)



What equipment does the energy storage power station cabinet have

Energy storage power station cabinets utilize various battery technologies, each with unique characteristics and applications. Lithium-ion batteries are perhaps the most ...

[Request Quote](#)

[How To Replace Base Station Batteries.. SimpliSafe ...](#)

Once you have acquired the necessary NiMH rechargeable batteries, you can follow the steps below to replace them: Ensure your system is disarmed ...

[Request Quote](#)





Telecom battery backup systems

Telecom battery backup systems mainly refer to communication energy storage products used for backup power supply of communication ...

[Request Quote](#)

What to Know About OEM Rack-Mounted Lithium Batteries for Telecom Base

OEM rack-mounted lithium batteries are specifically designed for integration into telecom equipment racks. They utilize advanced lithium-ion technology, allowing for compact ...

[Request Quote](#)



[What are base station energy storage batteries used for?](#)

Innovations in battery technologies, such as lithium-sulfur or solid-state batteries, promise higher energy densities and improved lifespan, ...

[Request Quote](#)



[What is a base station energy storage battery?](#)

Base station energy storage batteries offer vital support to enhance the stability of both telecommunications and electrical grids. During power ...

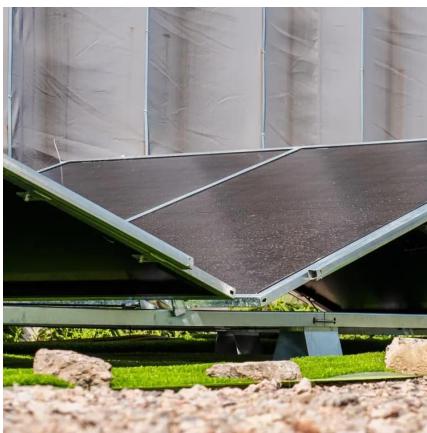
[Request Quote](#)



[Power outage frustration has Houston homeowners ...](#)

Homeowners in Houston are increasingly considering battery backup systems to mitigate the inconvenience of power outages.

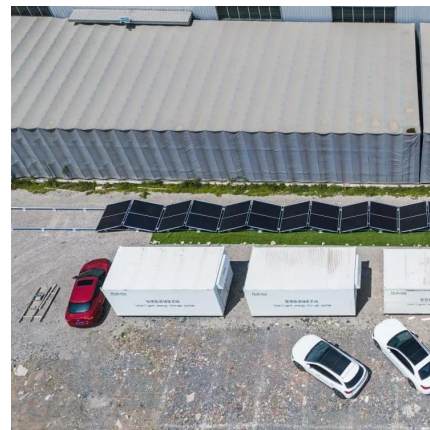
[Request Quote](#)



[The 7 Best Portable Power Stations of 2025](#)

Bring big backup power with you with these expert-recommended portable power stations, which can store enough power to charge electronics, ...

[Request Quote](#)



[What is a base station energy storage battery? , NenPower](#)

Base station energy storage batteries offer vital support to enhance the stability of both telecommunications and electrical grids. During power outages or disruptions, these ...

[Request Quote](#)





[How about base station energy storage batteries](#)

Base stations primarily utilize lithium-ion and lead-acid batteries. Lithium-ion batteries are favored for their higher energy density, longer ...

[Request Quote](#)



[What are base station energy storage batteries used for?](#)

Innovations in battery technologies, such as lithium-sulfur or solid-state batteries, promise higher energy densities and improved lifespan, thereby enhancing the operational ...

[Request Quote](#)

[What Is a Forklift Battery Charger Station? Why It ...](#)

How Does a Forklift Battery Charger Station Work? A forklift battery charger station connects to the battery via charging cables. When ...

[Request Quote](#)



[Battery storage power station - a comprehensive guide](#)

Battery storage power stations store electrical energy in various types of batteries such as lithium-ion, lead-acid, and flow cell batteries. These facilities require efficient operation ...

[Request Quote](#)



[Installation and hardware , Base Help Center](#)

When does Base deliver the installation equipment? Is there anything I should know about the pallet delivery? What are Base batteries made of? What are the advantages of our chemical ...

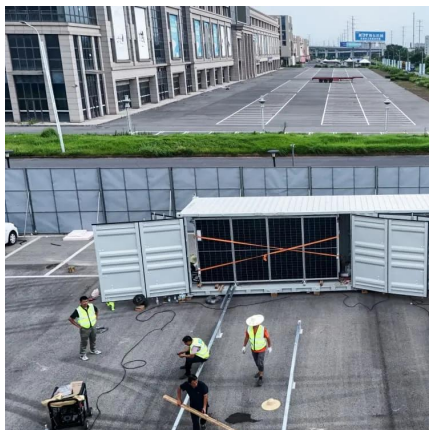
[Request Quote](#)



[Understanding how Base charges and discharges its batteries](#)

Base's batteries operate in charge-discharge cycles optimized for grid-balancing. They send energy back to the grid when it's needed most and charge when there's an abundance.

[Request Quote](#)



What equipment does the base station energy storage cabinet have

The equipment utilized in the base station energy storage cabinet comprises multiple essential components, which include: batteries, inverters, energy management ...

[Request Quote](#)





Discussion Forums

Hello-? anyone running the base in a base-rover setup with an external battery? We need to now run 2 bases. We have a battery that we purchased from our survey equipment ...

[Request Quote](#)

Contact Us

For catalog requests, pricing, or partnerships, please visit:
<https://espaciovet.es>