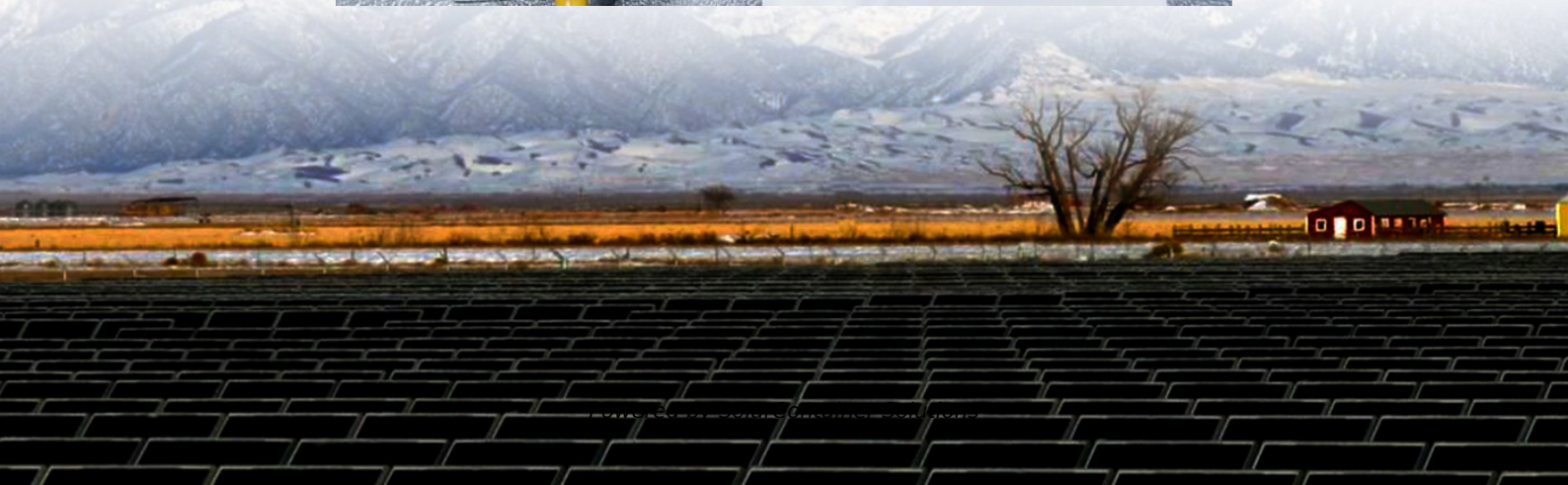


How does a base station achieve long-distance communication





Overview

A BTS is usually composed of: Transceiver (TRX) Provides transmission and reception of signals. It also does sending and reception of signals to and from higher network entities (like the base station controller in mobile telephony). This can be separated into a dedicated device known as a Remote radio head (RRH). Power amplifier (PA) Amplifies the signal from TRX for transmission through antenna; may be in.

Why are base stations important in cellular communication?

Base stations are important in the cellular communication as it facilitate seamless communication between mobile devices and the network communication. The demand for efficient data transmission are increased as we are advancing towards new technologies such as 5G and other data intensive applications.

How do base stations work?

Base stations use antennas mounted on cell towers to send and receive radio signals to and from mobile devices within their coverage area. This communication enables users to make voice calls, send texts, and access data services, connecting them to the wider world. Network Management and Optimization.

How does a wireless device communicate with a base station?

When a wireless device, such as a mobile phone, communicates with a base station, the device sends a signal to the base station, which converts the signal into digital form and sends it to the network. Similarly, when the network sends data to the device, the base station converts the digital data into a wireless signal that the device can receive.

Why is a base station important?

A base station plays a pivotal role in the realm of telecommunications, acting as the cornerstone of connectivity. It enables seamless communication by linking various wireless devices to broader networks, ensuring that data flows efficiently from one point to another.



What is a signal transmission & reception base station?

Signal Transmission and Reception Base stations use antennas mounted on cell towers to send and receive radio signals to and from mobile devices within their coverage area. This communication enables users to make voice calls, send texts, and access data services, connecting them to the wider world.

What is a base station in a wireless network?

At the heart of wireless communication networks are base stations, which act as the gateway between wireless devices and the network infrastructure. Base stations are responsible for transmitting and receiving data to and from wireless devices, as well as managing network resources and ensuring reliable and efficient communication.



How does a base station achieve long-distance communication



[Chinese scientists take big step on long-distance ...](#)

In mobile communication networks, data needs to be transmitted between user devices, base stations and core networks. Backhaul refers to ...

[Request Quote](#)

[Base Station's Role in Wireless Communication Networks](#)

A base station is fundamental in wireless communication, because it facilitates the connection between your device and the wider network. Without base stations, mobile data and voice ...

[Request Quote](#)



[What Are Base Station Antennas? Complete Guide](#)

This article will provide a thorough outlook on base station antennas from working principles, applications, installation and maintenance ...

[Request Quote](#)



Test and Measurement

The goal of Base Station Transmits is to discuss challenges faced by engineers and technicians who must optimize today's wireless networks.



Topics include antenna systems, ...

[Request Quote](#)



[What Are Base Station Antennas? Complete Guide](#)

This article will provide a thorough outlook on base station antennas from working principles, applications, installation and maintenance details and everything in between.

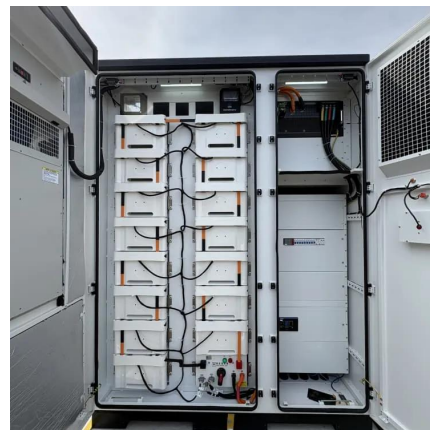
[Request Quote](#)



[Why can walkie-talkies achieve a communication ...](#)

Both the two-way radio and the mobile phone are communication tools. The two-way radio can realize intercom alone, the communication distance can reach ...

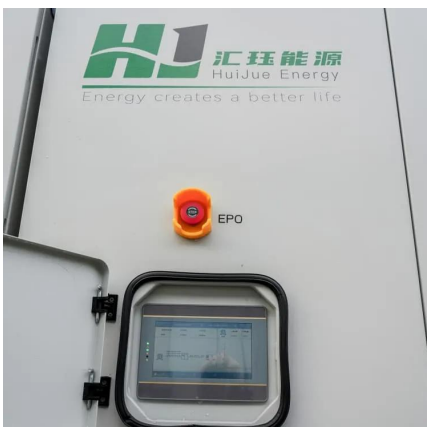
[Request Quote](#)



[What is the Farthest Distance Radio Can Reach?](#)

Radio communication relies on understanding frequency bands and the role of antennas in signal transmission. These elements are crucial for ...

[Request Quote](#)





The Base Station in Wireless Communications: The ...

Equipped with an electromagnetic wave antenna, often placed on a tall mast, the base station enables communication between mobile terminals ...

[Request Quote](#)



Blimp-borne laser communication technology based on ...

Abstract--Space dynamic communication base stations are characterized by high mobility, flexible deployment and wide coverage. It has a wide range of needs in the fields of emergency

[Request Quote](#)

Types and Applications of Mobile Communication ...

Mobile communication base station is a form of radio station, which refers to a radio transceiver station that transmits information between mobile ...

[Request Quote](#)



Base Stations and Cell Towers: The Pillars of Mobile Connectivity

Base stations and cell towers are critical components of cellular communication systems, serving as the infrastructure that supports seamless mobile connectivity. These ...

[Request Quote](#)



The Central Role of Base Stations in Two-Way Radio Systems

Positioned strategically to cover a designated area, a base station transmits and receives signals to and from portable or mobile two-way radios, enabling seamless communication across ...

[Request Quote](#)



HF

The dominant means of long distance communication in this band is skywave (skip) propagation, in which radio waves directed at an angle into the sky reflect (actually refract) back to Earth ...

[Request Quote](#)

Base Stations and Cell Towers: The Pillars of Mobile ...

Base stations and cell towers are critical components of cellular communication systems, serving as the infrastructure that supports seamless ...

[Request Quote](#)





[The Base Station in Wireless Communications: The ...](#)

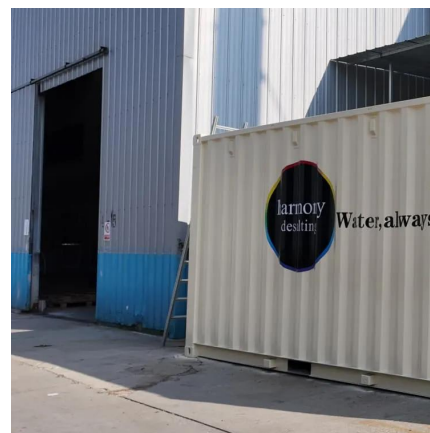
Base station, also known as BTS (Base Transceiver Station), is a key device in wireless communication systems such as GSM. Equipped with ...

[Request Quote](#)

[HF Radios Make a Comeback and Enable Global ...](#)

The Modern Battlespace examines how HF radios are making a comeback in military ground communications due to its reliability and clarity.

[Request Quote](#)



[How LoRa enables long-range communication](#)

LoRa (Long Range) is a type of wireless communication technology designed to send information over long distances with low power consumption. It uses a special technique ...

[Request Quote](#)

Types and Applications of Mobile Communication Base Stations

Mobile communication base station is a form of radio station, which refers to a radio transceiver station that transmits information between mobile phone terminals through a ...

[Request Quote](#)



Base transceiver station

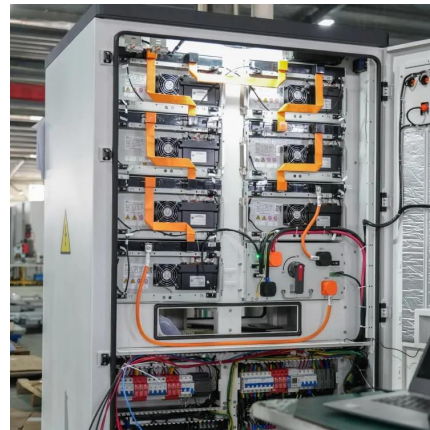
A BTS is usually composed of: Transceiver (TRX) Provides transmission and reception of signals. It also does sending and reception of signals to and from higher network entities (like the base station controller in mobile telephony). This can be separated into a dedicated device known as a Remote radio head (RRH). Power amplifier (PA) Amplifies the signal from TRX for transmission through antenna; may be in...

[Request Quote](#)

The Base Station in Wireless Communications: The Key to ...

Equipped with an electromagnetic wave antenna, often placed on a tall mast, the base station enables communication between mobile terminals (such as mobile phones or ...

[Request Quote](#)



High Frequency (HF) Radio

An ionized molecule is good for bouncing radio waves so an ionized layer of atmosphere is good for long distance communications. Where the knowledge shown here ...

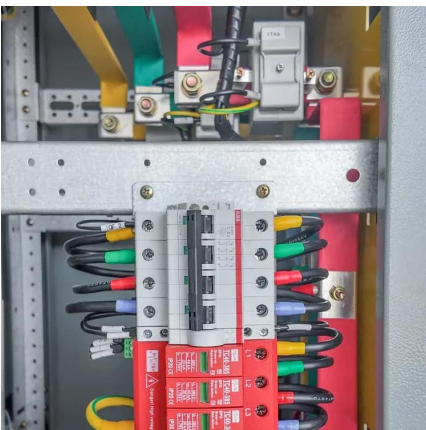
[Request Quote](#)



The Base Station in Wireless Communications: The Key to ...

Base station, also known as BTS (Base Transceiver Station), is a key device in wireless communication systems such as GSM. Equipped with an electromagnetic wave ...

[Request Quote](#)



Base Stations

Base stations form a key part of modern wireless communication networks because they offer some crucial advantages, such as wide coverage, continuous communications and ...

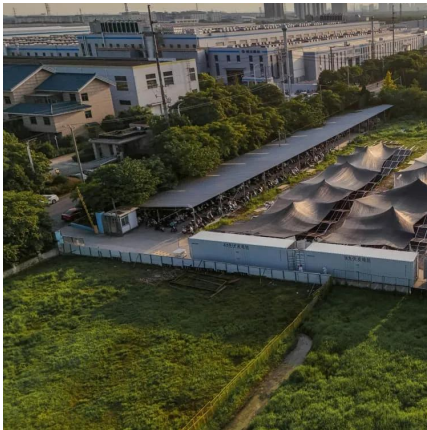
[Request Quote](#)

Long Distance Network

A Long Distance Network refers to a network architecture designed for communication over significant geographical distances, such as those used by long-distance carriers like AT&T, ...

[Request Quote](#)





Base transceiver station

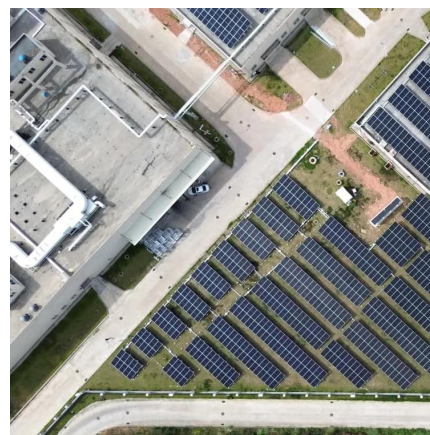
Provides transmission and reception of signals. It also does sending and reception of signals to and from higher network entities (like the base station controller in mobile telephony). This can ...

[Request Quote](#)

BS (Base Station)

Base stations use a variety of technologies to ensure reliable and efficient communication. Some of the key technologies used in base stations ...

[Request Quote](#)



What Is A Base Station?

Microwave Base Station: Microwave base stations use microwave radio signals to transmit data over long distances. They are commonly used for point-to-point communication ...

[Request Quote](#)

[Understanding LoRaWAN®: A Low Power, Long ...](#)

The Adaptive Data Rate (ADR) dynamically adjusts communication range and message duration to maximize battery life and ...

[Request Quote](#)



BS (Base Station)

Base stations use a variety of technologies to ensure reliable and efficient communication. Some of the key technologies used in base stations include: MIMO is a ...

[Request Quote](#)



[The Central Role of Base Stations in Two-Way Radio ...](#)

Positioned strategically to cover a designated area, a base station transmits and receives signals to and from portable or mobile two-way radios, enabling ...

[Request Quote](#)



[The evolution of lunar communication--From the ...](#)

Radio communication plays a fundamental role in space vehicle projects because this is the most obvious way to communicate with the ...

[Request Quote](#)





Contact Us

For catalog requests, pricing, or partnerships, please visit:
<https://espaciovet.es>