

How is the communication 5g base station effect





Overview

What were the effects of a 5G base station?

After deployment of 5G base stations close to her living place she developed severe ill health including fatigue, dysesthesia, dizziness, balance disorder, and light sensitivity that all are included in the microwave syndrome. Also her 83 years old husband was affected, although to a minor extent.

Does 5G signal exposure affect base station compliance?

This agrees with measurements done in other countries whose authors conclude that the exposure to 5G signals is limited , , , but this does not assure the base station compliance as full load situation should be considered for such assessment. It also shows that the increase in the EMF field is due to the induced data traffic.

Does a 5G base station increase field levels?

Adding the 5G systems does not significantly increase the overall field levels in the surroundings of the base station, in normal working conditions, compared to those of the previous generation. This has been checked during a measurement campaign in the surroundings of a 5G base station under operation.

How will 5G base stations and devices work?

To address the demands of increased performance, 5G base stations and devices will use many antennas. Arrays of up to hundreds of small antennas at the base station will make it possible to focus the transmission of radio waves to maximize the signals that the connected devices receive. This is called beamforming or massive MIMO.

How will 5G work?

The power levels of the radio signals transmitted by 5G radio equipment will be of similar or lower magnitude as those used in previous networks. 5G



devices will be designed and tested to comply with established radio wave exposure limits. 5G base stations will be positioned so that the exposure in homes and public areas is well below the limits.

Why is a 5G network a challenge?

5G networks deployment poses new challenges when evaluating human exposure to electromagnetic fields. Fast variation of the user load and beamforming techniques may cause large fluctuations of 5G base stations field level. They may be underestimated, resulting in compliance of base stations not fitting the requirements.



How is the communication 5g base station effect



Health Effects of 5G Base Station Exposure: A Systematic Review

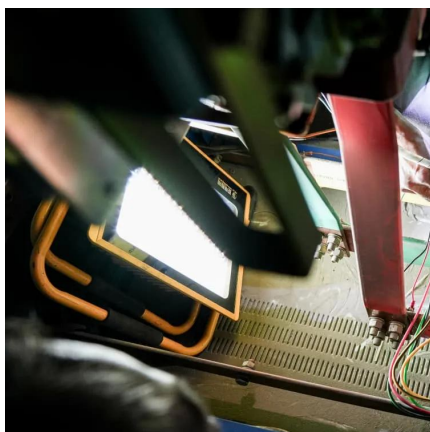
This review analyzes the latest research on electromagnetic exposure on humans, with particular attention to its effect on cognitive performance, well-being, physiological ...

[Request Quote](#)

Coordination of Macro Base Stations for 5G Network with User ...

The coordination among the communication equipment and the standard equipment in 5G macro BSs is developed to reduce both the energy consumption and the electricity costs.

[Request Quote](#)



base station in 5g

A 5G base station, also known as a gNodeB (gNB), is a critical component of a 5G network infrastructure. It plays a central role in enabling ...

[Request Quote](#)

Separation Distance Reduction between 5G NR Base Station ...

Considering the urgency of the 3.5 GHz frequency band, which is within the C-band



range, in providing communication services through satellite, then the coexistence between FSS and ...

[Request Quote](#)



[Advanced Optical-Radio Communication System for ...](#)

Download Citation , Advanced Optical-Radio Communication System for 5G Base Stations at 60 GHz Using MMW-FSO Links with ...

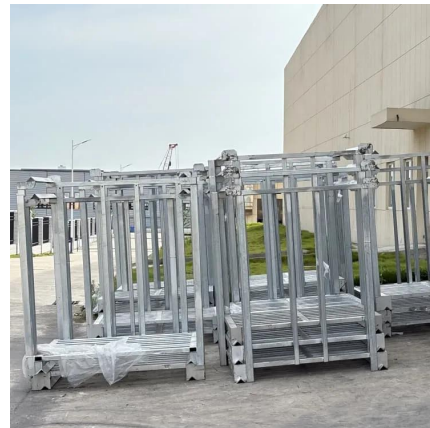
[Request Quote](#)



[Science on Health Risks of Cell Towers, 5G ...](#)

A 2016 study at Stockholm Central Railway Station in Sweden documented higher RF levels in areas where base station antennas were ...

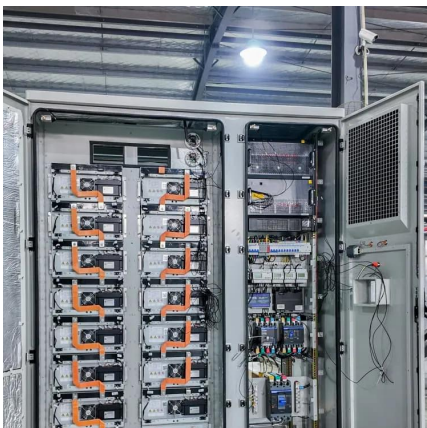
[Request Quote](#)



[5G, human exposure to electromagnetic fields \(EMF\) and health](#)

Despite extensive studies into the health effects of mobile phones and base stations over the last two or three decades, there is no indication of an increased health risk when exposed to ...

[Request Quote](#)

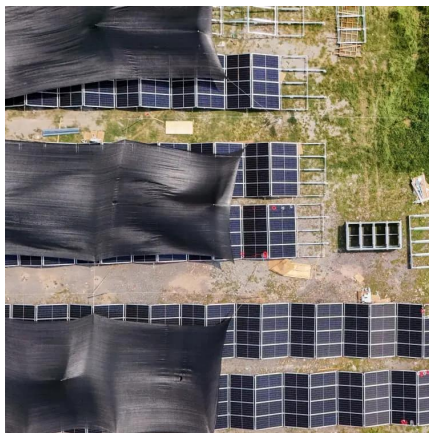




[Application of EMI Shielding Materials in 5G Base ...](#)

For 5G high-frequency communication, the shielding effect of conductive silicone strips is mainly realized through eddy current effects. The ...

[Request Quote](#)



Hierarchical regulation strategy based on dynamic clustering for

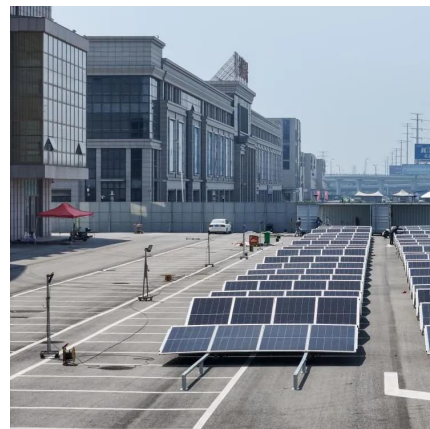
The accuracy of regulation and utilization of the regulable potential are ensured by the dynamic clustering. Abstract Utilizing the backup energy storage potential of 5G base ...

[Request Quote](#)

[Health Effects of 5G Base Station Exposure: A Systematic ...](#)

ABSTRACT The Fifth Generation (5G) communication technology will deliver faster data speeds and support numerous new applications such as virtual and augmented reality. The additional ...

[Request Quote](#)



[5G equipment, safety standards and performance](#)

Like in previous mobile networks, 5G devices communicate with base stations by transmitting and receiving radio waves, or radio frequency (RF) electromagnetic fields (EMF). 5G networks ...

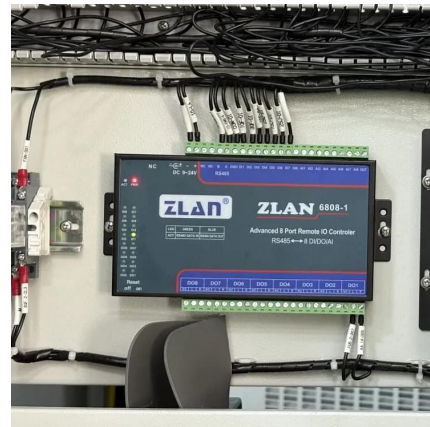
[Request Quote](#)



Health Effects of 5G Base Station Exposure: A Systematic Review

The Fifth Generation (5G) communication technology will deliver faster data speeds and support numerous new applications such as virtual and augmented reality. The additional need for a ...

[Request Quote](#)



Health Effects of 5G Base Station Exposure: A Systematic Review

The Fifth Generation (5G) communication technology is set to deliver faster data speeds and support new applications like virtual and augmented reality. This advancement requires a ...

[Request Quote](#)

[5G Devices and Thermal Management, Advanced ...](#)

From base stations to cell phones, 5G communications can dramatically improve mobile communications among billions of connected ...

[Request Quote](#)





Design of high gain base station antenna array for mm-wave ...

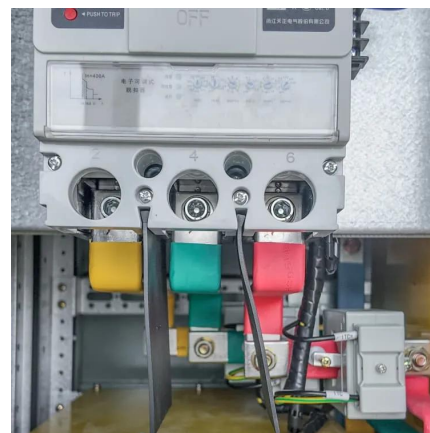
The antennas mentioned above are dedicated for the 5G mobile devices but cannot be adopted for base station applications because of their low gain. Consequently, in ...

[Request Quote](#)

Revealing 5G Cell Tower Health Impacts: 7 Scientific Case Studies

In this case report we present a woman aged 52 years who developed health problems consistent with the microwave syndrome after installation of a 5G base station facing ...

[Request Quote](#)



Human exposure to EMF from 5G base stations: analysis, ...

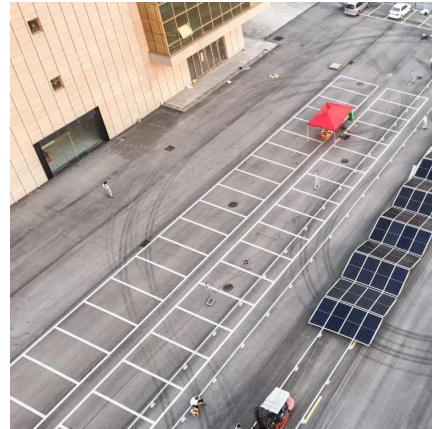
This paper analyzes the feasibility of assessing the 5G base stations compliance using broadband field probes and compares their performance with alternative methodologies ...

[Request Quote](#)

The energy use implications of 5G: Reviewing whole network ...

Addressing this gap, we conduct a literature review to examine whole network level assessments of the operational energy use implications of 5G, the embodied energy use ...

[Request Quote](#)



[5G Airplane: Cessna is High-Altitude Platform Station](#)

Researchers in Japan used a Cessna aircraft to simulate a high-altitude platform station (HAPS) for 5G cellular backhaul links.

[Request Quote](#)



[The Role Of Communication Base Stations In 5g Networks](#)

Explore the vital role of communication base stations in 5G networks! Discover how they enhance connectivity, capacity, and support emerging technologies.

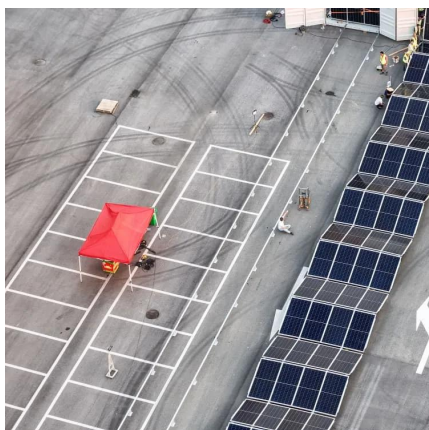
[Request Quote](#)



Optimal energy-saving operation strategy of 5G base station with

To further explore the energy-saving potential of 5 G base stations, this paper proposes an energy-saving operation model for 5 G base stations that incorporates communication caching ...

[Request Quote](#)





A feasibility study of 5G positioning with current cellular network

The main focus lies on the analysis of synchronization among the base stations of a real 5G network in Milan, Italy, as this has a major impact on the accuracy of localization ...

[Request Quote](#)



5G, human exposure to electromagnetic fields (EMF) ...

Despite extensive studies into the health effects of mobile phones and base stations over the last two or three decades, there is no indication of an ...

[Request Quote](#)

What is a 5G base station?

A 5G Base Station, also Known as A GNB (Next-Generation NodeB), is a fundamental component of the fifth-generation (5G) Wireless Network Infrastructure. It serves ...

[Request Quote](#)



Science on Health Risks of Cell Towers, 5G Exposure, Small Cell

A 2016 study at Stockholm Central Railway Station in Sweden documented higher RF levels in areas where base station antennas were located closest to people. Importantly, ...

[Request Quote](#)



Research and Implementation of 5G Base Station Location ...

Especially with the development and promotion of national 5G technology, the construction of 5G base stations is an important part of the future communication infrastructure. Therefore, base ...

[Request Quote](#)



Contact Us

For catalog requests, pricing, or partnerships, please visit:
<https://espaciovet.es>