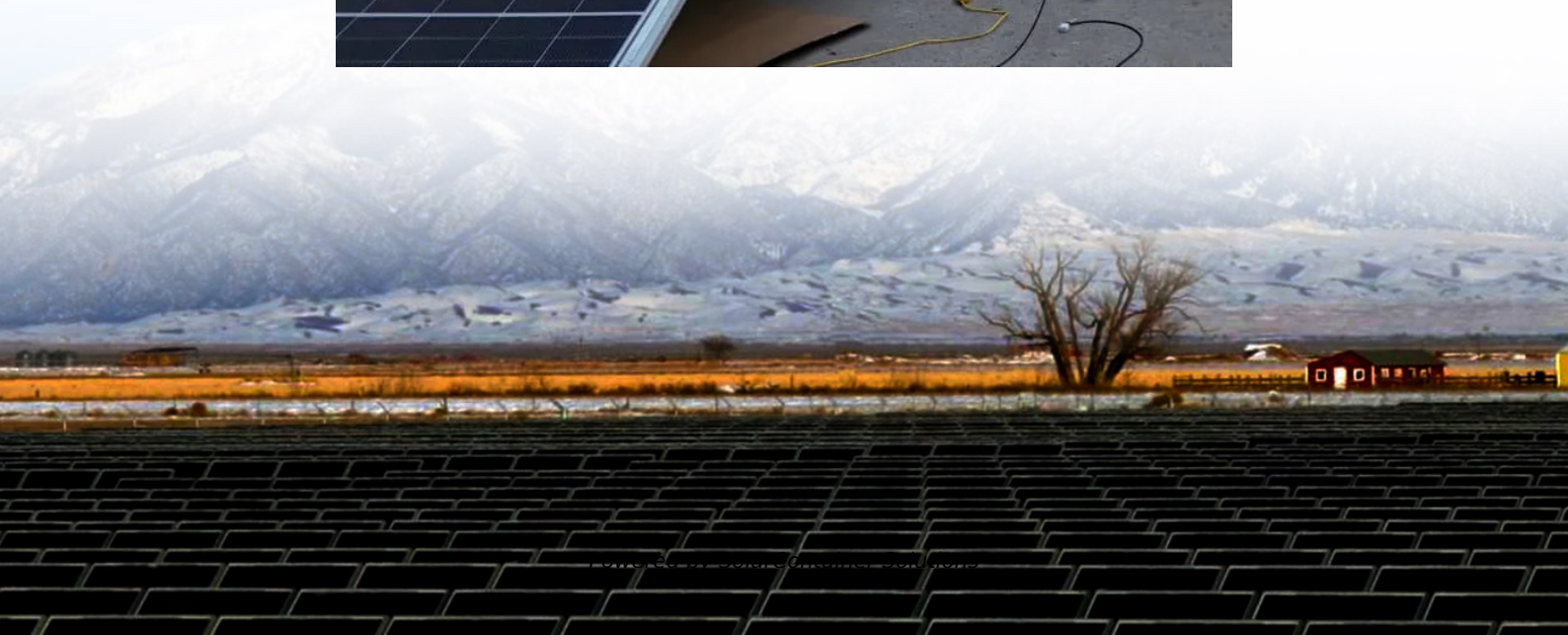


# **How many amperes can the battery cabinet be charged with**





## Overview

---

So, the charging current should be no more than 11.25 Amps (to prevent thermal runaway and battery expiration). Importantly, if you have other equipment connected to the battery during charging, it also needs to be powered, so you need to add that to your calculations. How many amps should a car battery charge?

The ideal current or amps to charge a car battery are 20% of its full capacity e.g. 10 amps for a 50Ah battery. The ideal charging current for a 12V 7Ah battery is 1.4 amps. Maximum charging current for 100Ah battery should not be above its 20% of full capacity (20 amps).

How much current can a lithium ion battery supply?

The higher the internal resistance, the lower the maximum current that can be supplied. For example, a lead acid battery has an internal resistance of about 0.01 ohms and can supply a maximum current of 1000 amps. A Lithium-ion battery has an internal resistance of about 0.001 ohms and can supply a maximum current of 10,000 amps.

How many amps should a 120Ah battery charge?

The ideal charging current for a 120Ah battery is 24 amps when the battery is fully discharged but when the SOC is above 80% the amps will gradually start to decrease. Maximum charging current for 150Ah battery should not be above 30 amps. Recommended maximum charging current for 200Ah battery is 40 amps.

How many amps should a 12V battery charge?

We have the answer: 25% of the battery capacity. The battery capacity is indicated by Ah (Ampere Hour). For example: In a 12V 45Ah Sealed Lead Acid Battery, the capacity is 45 Ah. So, the charging current should be no more than 11.25 Amps (to prevent thermal runaway and battery expiration).

How much current can a battery supply?



A battery can supply a current as high as its capacity rating. For example, a 1,000 mAh (1 Ah) battery can theoretically supply 1 A for one hour or 2 A for half an hour. The amount of current that a battery actually supplies depends on how quickly the device uses up the charge. What Factors Affect How Much Current a Battery Can Supply?

.

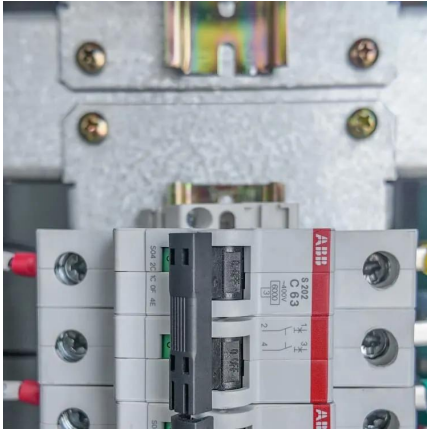
How to calculate car battery amps?

When you know the percentage of charge remaining, you can calculate current car battery amps. If a 1000-amp battery has 50% capacity, then the current car battery amps is 500. Before you charge a car battery, there are a few things you should be aware of so that you can ensure that the car battery does not get overcharged and damaged.



## How many amperes can the battery cabinet be charged with

---



### [How Many Amps Does a 12-Volt Battery Charger Use? \(Answered\)](#)

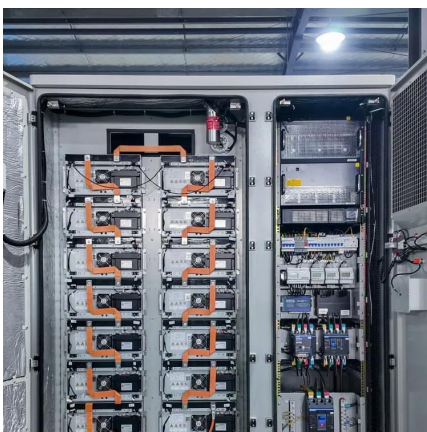
A 12-volt battery charger uses a maximum of 10 amps. This is the standard for charging a car battery. Most home outlets are 15 or 20 amps, so a 12-volt charger will not ...

[Request Quote](#)

### [What amp should I charge my LiFePO4 battery?](#)

The battery capacity (in Ah) multiplied by the C-rate gives you the recommended charging current. In the case of a 12V 100Ah battery, the ...

[Request Quote](#)



### [How Many Amps Does a Car Battery Draw When ...](#)

Once the battery is fully charged, disconnect the charger promptly to prevent excessive amp draw. Keep the battery and charging system clean: Dirt, ...

[Request Quote](#)

### [How Many Amps Should I Charge My Car Battery At?](#)

Charging a car battery at 4 to 7.5 amps is the safest and most efficient. Charging amps in this





range will allow the battery to be completely charged overnight and will not be at risk of ...

[Request Quote](#)



### [How to Calculate Battery Charging Time and Current?](#)

First, we will calculate the charging current for a 120Ah battery. As a general rule of thumb, the charging current should be ? 10% of the battery's Ah rating. ...

[Request Quote](#)

### [How Many Amps Should I Use to Charge My Car Battery?](#)

Selecting the right charging amps for your car battery is crucial for optimal performance and battery health. For traditional lead-acid batteries, a 1-3 amps charger is ...

[Request Quote](#)



### [How to Calculate Battery Charging Time and Current?](#)

First, we will calculate the charging current for a 120Ah battery. As a general rule of thumb, the charging current should be ? 10% of the battery's Ah rating. Therefore, Charging Current for ...

[Request Quote](#)



## [How Many Amps Can a AA Battery Supply?](#)

A AA battery can supply between 0.1 and 3 amps, depending on the type of battery. The most common types of AA batteries are alkaline and ...

[Request Quote](#)



## [How Many Amps in a 12 Volt Battery? \(Calculation\)](#)

Battery Capacity and Amperage Understanding how batteries work can make a big difference in the life of your automobile batteries. Amp ...

[Request Quote](#)



## [Car Battery Amps Explained: Cranking Power vs. Capacity](#)

Not sure how many amps your car battery has? We clarify! Explore the difference between car battery cranking amps (CCA) and amp-hours (Ah). Find out which amp rating ...

[Request Quote](#)



## **Optimal Amps for Charging Motorcycle Battery: Key Factors and ...**

You now have a clear understanding of the crucial factors that determine how many amps are needed to charge your motorcycle battery effectively. By considering battery ...

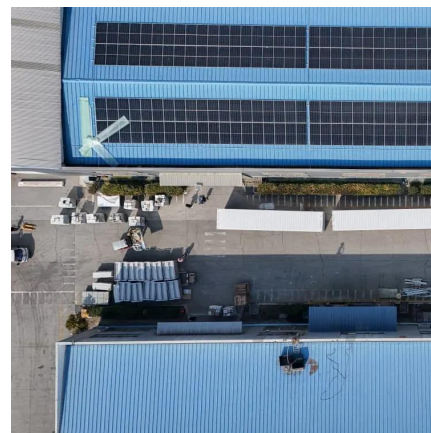
[Request Quote](#)



### How Many Amps Should I Charge My Car Battery At?

Charging a car battery at 4 to 7.5 amps is the safest and most efficient. Charging amps in this range will allow the battery to be completely charged overnight ...

[Request Quote](#)



### **Mastering Battery Charging: How to Interpret Battery Charger Amp ...**

Learn how to read a battery charger amp meter correctly, understand charging stages, and prevent overcharging for optimal battery life.

[Request Quote](#)

### **How many currents Can a Battery Supply & How Batteries are ...**

How much current a battery can supply is limited by the internal resistance of the battery. The higher the internal resistance, the lower the maximum current that can be ...

[Request Quote](#)





## Amp Hours Calculator

What Are Amp Hours (Ah)? An amp hour (Ah) is a unit of electric charge. It represents how many amps of current a battery can supply in one hour. Formula: Amp Hours = Current (in Amps) × ...

[Request Quote](#)

## [AUT 242-Chapter 13 Flashcards , Quizlet](#)

a rating for batteries that is the number of minutes for which the battery can produce 25 amperes and still have a battery voltage of 1.75 volts per cell (10.5 volts for a 12 volt battery)

[Request Quote](#)



## Battery pack calculator : Capacity, C-rating, ampere, charge and

For a given capacity, C-rate is a measure that indicate at what current a battery is charged and discharged to reach its defined capacity.

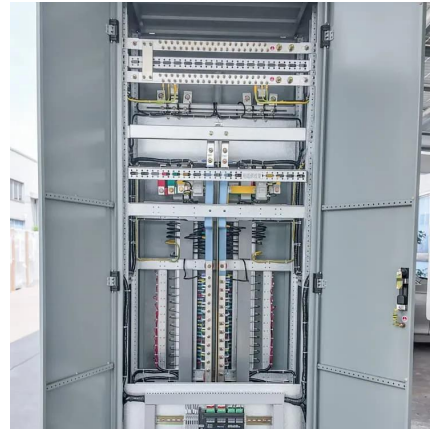
[Request Quote](#)

## [Car Battery Amps Explained: Cranking Power vs. Capacity](#)

How much current a battery can supply is limited by the internal resistance of the battery. The higher the internal resistance, the lower the ...

[Request Quote](#)





### [How Many Amps Does A Battery Charger Draw?](#)

Higher amps translate into a shorter charging time. But what does that tell you about the battery charger's amp draw? The guide below has the answers. ...

[Request Quote](#)



### [Battery Runtime Calculator , How Long Can A Battery ...](#)

Battery Capacity: Measured in amp-hours (Ah), it indicates how much charge the battery can hold.  
Voltage: This determines the energy per ...

[Request Quote](#)



### [How Many Amps Should I Use to Charge My Car ...](#)

Selecting the right charging amps for your car battery is crucial for optimal performance and battery health. For traditional lead-acid batteries, a 1 ...

[Request Quote](#)





### [How many amperes can the battery cabinet be charged with](#)

While the current value of the Maxell branded Alkaline battery is 2.75 Amperes, the value of the Nickel battery, which is a charged battery, is 3.10 Amperes. Although it is 2.75 amps, this ...

[Request Quote](#)



### [Amp Hour Calculator \(Battery Capacity Calculator\) - ...](#)

Learn how to estimate battery capacity using amp hours to match your home appliances. Enjoy reliable off-grid power with ease.

[Request Quote](#)

### [Choose the Right Amps for Your Car Battery Charger: ...](#)

Ever wondered how many amps your car battery charger needs? Picture this: you're stranded with a dead battery, and you're not sure which ...

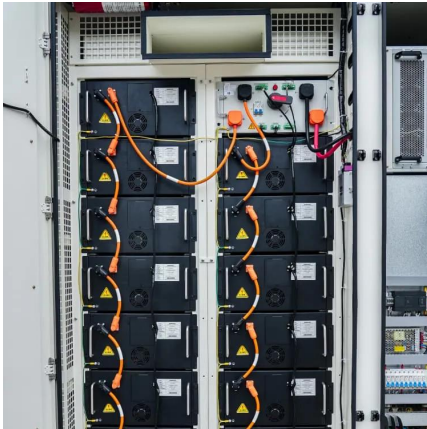
[Request Quote](#)



### [How Many Amps Should A Fully Charged Car Battery Have?](#)

A: The ideal ampere rating for a fully charged car battery depends on the battery size, type, and age. Generally, smaller batteries have lower ampere ratings, while larger ...

[Request Quote](#)



### [Guide: Maximum Charging Current & Voltage For 12v ...](#)

As a rule of thumb, the minimum amps required to charge a 12v battery is 10% of its full capacity but the ideal charging current should be ...

[Request Quote](#)



### [Find out the required power for your EV charging station](#)

48 A: 11.5 kW ( $11.5\text{kW}/240\text{V} = 48\text{A}$ ) Higher amperage means higher power capability, and thus faster charging--provided your EV can accept the charging station's full power output. For ...

[Request Quote](#)

### [Guide: Maximum Charging Current & Voltage For 12v Battery](#)

As a rule of thumb, the minimum amps required to charge a 12v battery is 10% of its full capacity but the ideal charging current should be between 20-25% of the battery's capacity

[Request Quote](#)





### [What charging current should I use for a lead acid battery?](#)

So, the charging current should be no more than 11.25 Amps (to prevent thermal runaway and battery expiration). Importantly, if you have other equipment connected to the ...

[Request Quote](#)

## Contact Us

---

For catalog requests, pricing, or partnerships, please visit:  
<https://espaciovet.es>