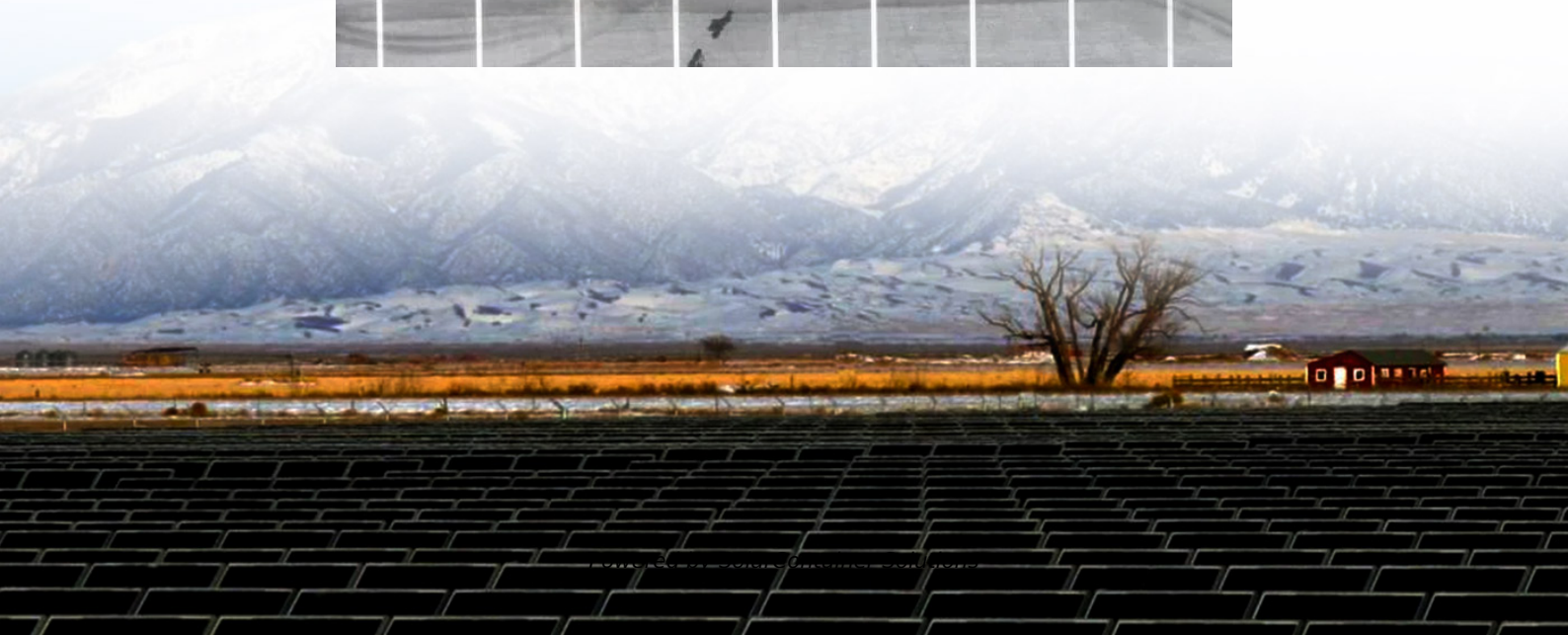


# **Indoor Communication Green Base Station**





## Overview

---

Are green cellular base stations sustainable?

This study presents an overview of sustainable and green cellular base stations (BSs), which account for most of the energy consumed in cellular networks. We review the architecture of the BS and the power consumption model, and then summarize the trends in green cellular network research over the past decade.

What is a green base station solution?

The green base station solution involves base station system architecture, base station form, power saving technologies, and application of green technologies. Using SDR-based architecture and distributed base stations is a different approach to traditional multiband multimode network construction.

What should a base station do in a wireless communications network?

In a wireless communications network, the base station should maintain high-quality coverage. It should also have the potential for upgrade or evolution. As network traffic increases, power consumption increases proportionally to the number of base stations. However, reducing the number of base stations may degrade network quality.

What is a green communication initiative?

The green communication initiative primarily aims to improve the energy efficiency, reduce the OPEX, and eliminate the GHG emissions of BSs to guarantee their future evolution [ 2, 3 ]. Cellular network operators attempt to shift toward green practices using two main approaches.

Are cellular network operators moving towards green cellular BS?

Figure 10 reveals that many cellular network operators in the world have still not shifted toward green cellular BS. Most of these operators are located in developing countries with limited electricity supply and unreliable electric



grids. The financial issues in these countries must be investigated further. 4.5.

How do cellular network operators shift to green practices?

Cellular network operators attempt to shift toward green practices using two main approaches. The first approach uses energy-efficient hardware to reduce the energy consumption of BSs at the equipment level and adopts economic power sources to feed these stations.



## Indoor Communication Green Base Station

---



### [Green Base Station Solutions and Technology](#)

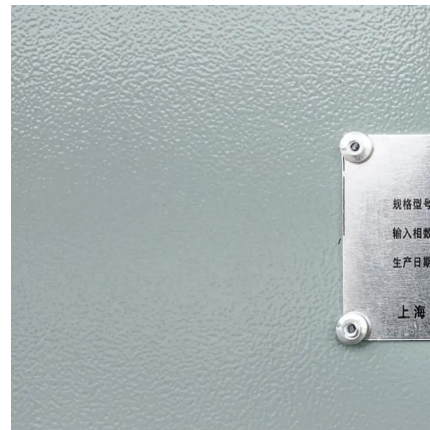
This paper discusses green base stations in terms of system architecture, base station form, power saving technologies, and green technology applications. It explores ...

[Request Quote](#)

10

[44] L., Saker and S-E., Elayoubi, "Sleep mode implementation issues in green base stations," in Proc. of International Symposium on Personal, Indoor and Mobile Radio ...

[Request Quote](#)



### **Cooling technologies for data centres and telecommunication base**

We used the following keywords "data centre cooling" OR "communication base station cooling" OR "data centre refrigeration" OR "communication base station refrigeration" ...

[Request Quote](#)

### [Green Communications: Principles, Concepts and ...](#)

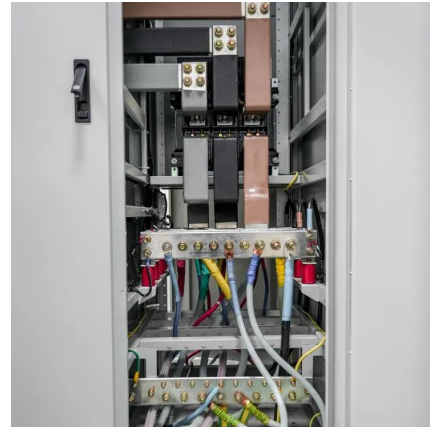
These two types of networks are discussed here jointly due to many similarities they exhibit,





namely, similar propagation environments (dominantly ...

[Request Quote](#)



## Placing base stations in wireless indoor communication networks

More and more mobile communications comes to company sites through local (typically indoor) wireless communication networks. However, planning wireless networks is quite different from ...

[Request Quote](#)



## Low-Carbon Sustainable Development of 5G Base Stations in China

Goncalves et al. (2020) explored carbon neutrality evaluation of 5G base stations from the perspective of network structure and carbon sequestration. Despite the growing ...

[Request Quote](#)



## [DECT Infrastructure , Alcatel-Lucent Enterprise](#)

Our DECT Access Points and Base Stations pair with ALE DECT handsets for full integration with Alcatel-Lucent Communication Servers (enabling features like ...

[Request Quote](#)





## Energy-efficiency schemes for base stations in 5G heterogeneous

In today's 5G era, the energy efficiency (EE) of cellular base stations is crucial for sustainable communication. Recognizing this, Mobile Network Operators are actively ...

[Request Quote](#)



## [Renewable microgeneration cooperation with base station ...](#)

The energy consumption of the mobile network is becoming a growing concern for mobile network operators and it is expected to rise further with operational costs and carbon ...

[Request Quote](#)



## [Teltronic Introduces New Green Communications ...](#)

The GBS delivers the same output power as conventional base stations but in a more compact and lightweight form factor, reducing ...

[Request Quote](#)



## Energy-Efficient Base Stations , part of Green Communications

This chapter aims a providing a survey on the Base Stations functions and architectures, their energy consumption at component level, their possible improvements and the major problems ...

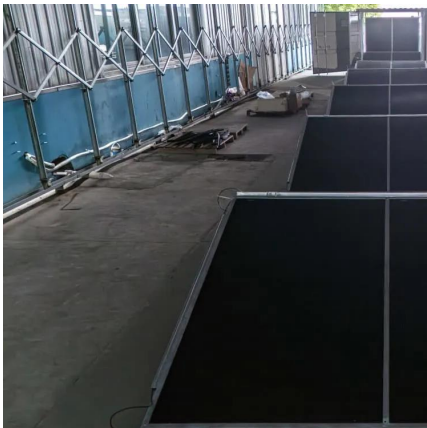
[Request Quote](#)



## i501/i501W SIP Indoor Station

The Fanvil i501/i501W SIP Indoor Station features a magnetic handset and one-touch remote unlocking for easy visitor access. With support for 2 SIP lines and a short-circuit ...

[Request Quote](#)



## Communication

[1] S. Wen and Y. Dong, "A low-profile vertically polarized antenna with conical radiation pattern for indoor micro base station application," IEEE Antennas Wireless Propag.

[Request Quote](#)

## [5G Indoor Small-Cell Base Station , Vicor](#)

Case study: 5G indoor small-cell base station. The demand for mobile data, video and music streaming has increased wireless network demand exponentially, ...

[Request Quote](#)





### [Placing base stations in wireless indoor communication ...](#)

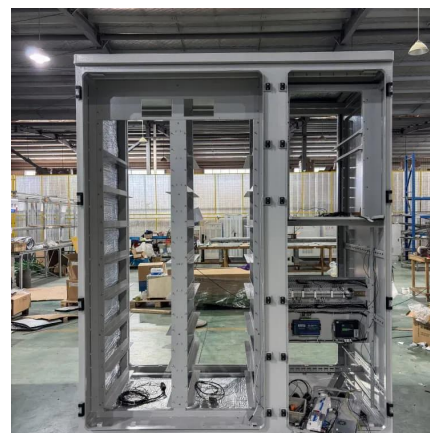
Thom Frühwirth, Pascal Brisset. Placing base stations in wireless indoor communication networks. IEEE Intelligent Systems & Their Applications, 2000, 15 (1), pp 49 - 53. ...

[Request Quote](#)

## **Power Base Station**

Base station power refers to the output power level of base stations, which is defined by specific maximum limits (24 dBm for Local Area base stations and 20 dBm for Home base stations) ...

[Request Quote](#)



### [Green Base Station Solutions and Technology](#)

This paper discusses green base stations in terms of system architecture, base station form, power saving technologies, and green ...

[Request Quote](#)

## **4G & 5G LTE Base Station**

Advanced 4G & 5G LTE-Advanced Base Station and EPC Infrastructure CableFree offers the Emerald range of 4G & 5G LTE Base Station and core ...

[Request Quote](#)





## All-in-one Indoor Station

Hikvision All-in-one Indoor Station takes a whole new approach to security. Along with video intercom, it also serves as a home or office management center ...

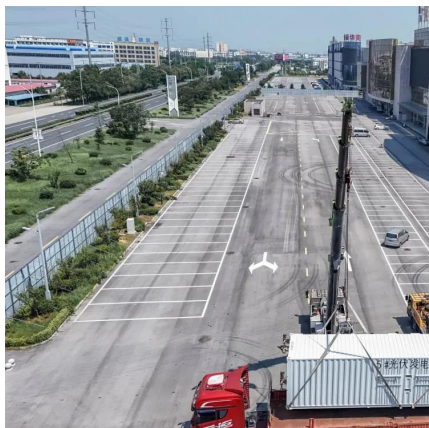
[Request Quote](#)



## [In Building Cellular Coverage Wireless Solutions](#)

These sites include antennas, a base station receiver, transmitters, GPS, and backup power. The equipment reliably transmits signals to and from mobile ...

[Request Quote](#)



## Green and Sustainable Cellular Base Stations: An Overview and ...

Energy efficiency and renewable energy are the main pillars of sustainability and environmental compatibility. This study presents an overview of sustainable and green cellular ...

[Request Quote](#)



## In Building Cellular Coverage Wireless Solutions

These sites include antennas, a base station receiver, transmitters, GPS, and backup power. The equipment reliably transmits signals to and from mobile devices in the area. Antennas can be ...

[Request Quote](#)



## **5G Indoor coverage**

Ericsson's indoor small cells are comprised of the Radio Dot System. The Radio Dots are high-performing cost-efficient nodes for 4G and 5G connectivity, built and optimized for ...

[Request Quote](#)

## **Energy-efficient indoor hybrid deployment strategy for 5G mobile**

...

In the context of 5th-generation (5G) mobile communication technology, deploying indoor small-cell base stations (SBS) to serve visitors has become common. However, indoor ...

[Request Quote](#)



## 5G Indoor Small-Cell Base Station , Vicor

Case study: 5G indoor small-cell base station. The demand for mobile data, video and music streaming has increased wireless network demand exponentially, and 5G networks are ...

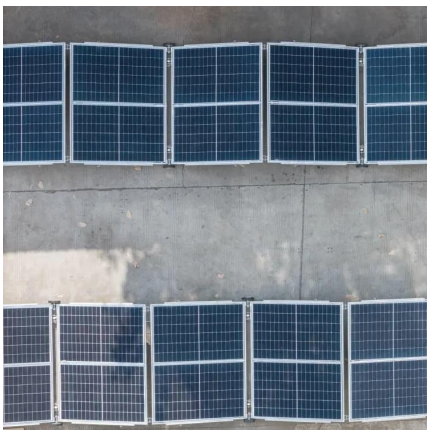
[Request Quote](#)



### Teltronic Introduces New Green Communications Base Station

The GBS delivers the same output power as conventional base stations but in a more compact and lightweight form factor, reducing infrastructure costs, eliminating the need ...

[Request Quote](#)



### BS418 Indoor TETRA base station from DAMM

The high-capacity indoor base station is the most user-friendly, flexible and cost-effective TETRA infrastructure system available. With its high reliability and unique design it is the ideal solution ...

[Request Quote](#)

### DECT Infrastructure , Alcatel-Lucent Enterprise

Our DECT Access Points and Base Stations pair with ALE DECT handsets for full integration with Alcatel-Lucent Communication Servers (enabling features like dial-by-name and multi-line ...

[Request Quote](#)





## Contact Us

---

For catalog requests, pricing, or partnerships, please visit:  
<https://espaciovet.es>