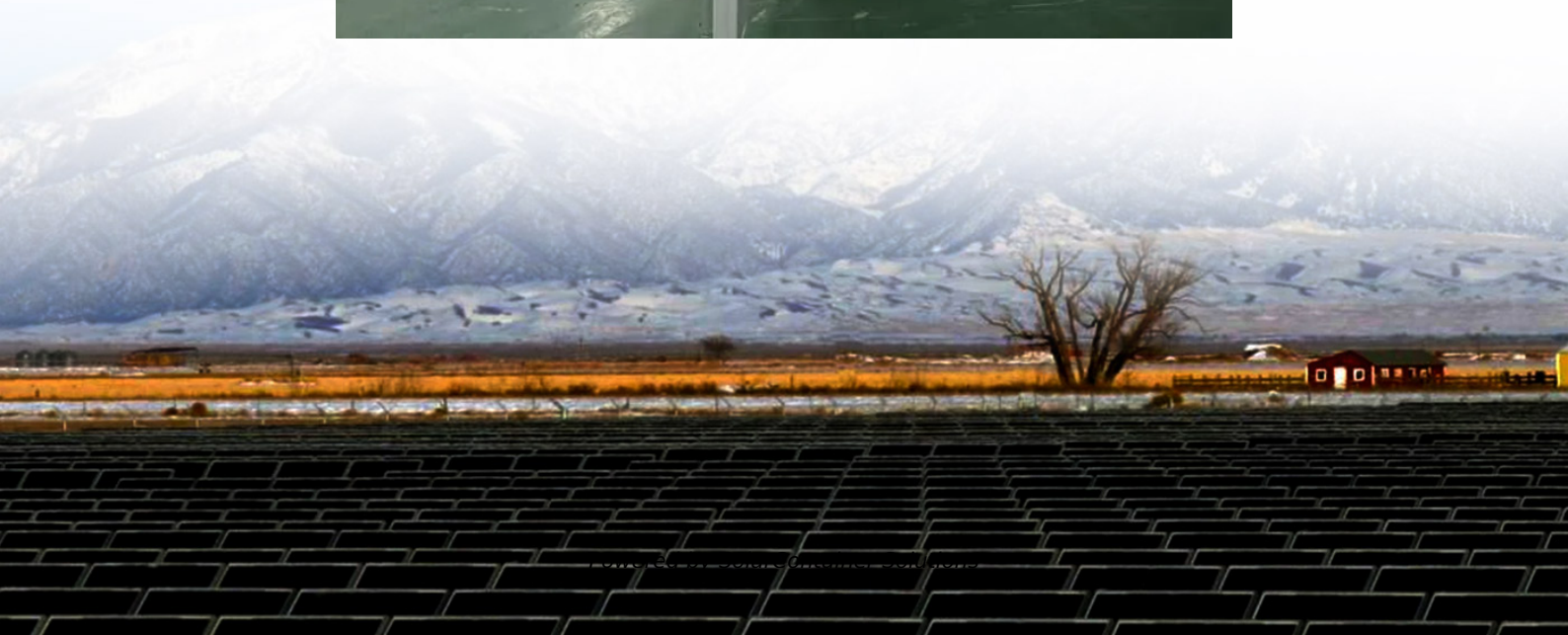


Inverter power is too large





Overview

Using an inverter that is significantly larger than the power requirements of your appliances can lead to reduced efficiency. Oversized inverters may operate at lower efficiency levels, resulting in wasted energy and increased operating costs. Are inverters too big?

Inverters play a crucial role in converting DC power to AC power, but choosing the right size is essential for optimal performance. In this article, we'll explore the potential implications of using an inverter that is too big for your power needs, shedding light on the effects and considerations associated with oversized inverters.

Does an oversized inverter waste power?

No, but it wastes solar potential. Panels generate DC power, but the inverter's inefficiency at low loads reduces usable AC output. Can I use a power optimizer with an oversized inverter?

.

Are oversized inverters more efficient?

Inverters achieve peak efficiency at 70–90% load. When oversized, they operate at low loads (e.g., 10–30%), wasting energy through higher standby consumption (up to 50W daily) and reduced conversion efficiency. Upfront Expense: Larger inverters cost 20–50% more than appropriately sized models.

How to avoid oversizing a power inverter?

Accurate assessment of power demands is crucial to avoid oversizing and its associated implications. The use of an oversized inverter can contribute to increased wear and tear on the connected appliances. The mismatch in power capacity may lead to unnecessary stress on the devices, potentially shortening their lifespan.

What happens if you undersize an inverter?



When you undersize an inverter, you pair it with a system that can produce more power than the inverter is rated for. That can cause inverter clipping. Clipping happens when there is more DC power being fed into the inverter than it is rated for. When that happens, the inverter will produce its maximum output and no more.

How does inverter size affect performance?

Here are several key ways that inverter size impacts performance: 1. Energy Conversion Efficiency Undersized Inverter: If the inverter is too small, it cannot handle the full output of the solar panels, leading to energy losses due to “clipping” during peak production times.



Inverter power is too large



Inverter Sizing: Can Your Inverter Be Too Big for Your Battery ...

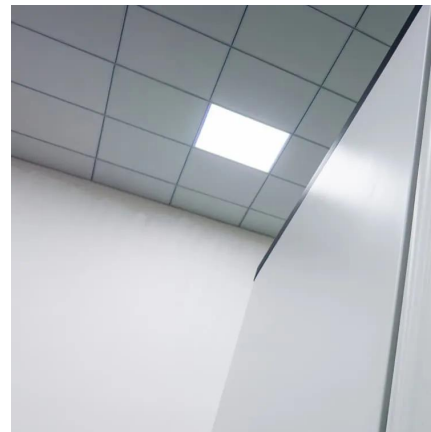
Using an inverter that is too large for the battery bank can lead to inefficient performance and reduced battery lifespan. An oversized inverter may draw more power than ...

[Request Quote](#)

What Happens If Your Inverter Is Too Big? Risks, Solutions

While it might seem like a "safer" choice, improper sizing leads to hidden pitfalls. Here's a detailed breakdown of the risks, solutions, and answers to critical questions. Inverters achieve peak ...

[Request Quote](#)



What Happens If the Inverter Is Too Big

In this article, we'll explore the potential implications of using an inverter that is too big for your power needs, shedding light on the effects and considerations associated with ...

[Request Quote](#)

Is my inverter too big? : r/SolarDIY

Having a big inverter and not using it means it will discharge the battery quicker just by being on. For use with a decently sized fridge 1.5kW



would be the minimum to be able to ...

[Request Quote](#)



[What Size Inverter Do I Need for My RV?](#)

RV inverters allows conversion from 12V battery power to 120V AC power. For your power needs, you need the right size inverter for your RV.

[Request Quote](#)

[Lesson 5: Solar inverter oversizing vs. undersizing](#)

When considering whether an inverter can be too big for a battery, it's essential to understand the implications of mismatched capacities. An oversized inverter may lead to inefficiencies, ...

[Request Quote](#)



Inverter noise

The duty cycle of the switching tube in the previous cycle is too large, the conduction time is too long, and the power is transmitted through ...

[Request Quote](#)



Inverter too big for array?

Inverter too big for array? I'm having trouble figuring this out. I am (at last) putting 12 panels 400 Wp. In theory the 5.0 model should more than suffice and I could even go for the ...

[Request Quote](#)



[What Inverter Size Do I Need to Run Power Tools?](#)

Power tools demand lots of energy, but an inverter can work with the right specs. Use this chart to find the inverter size you need.

[Request Quote](#)

Houseworks: Big inverters offer more efficient household backup power

2 days ago· If you're looking for the most efficient, quietest and most flexible source of backup electrical power for your home, then large inverter-generators are something you should know ...

[Request Quote](#)



Can An Inverter Be Too Big?

Inverters have to be sized for sufficient operational wattage and cope with surge loads for short periods. More often, the size of an inverter is too small to cope with additional ...

[Request Quote](#)



32 Common Faults in Inverters and Their Solutions

GUIDE Inverters, which convert direct current (DC) to alternating current (AC), are critical components in various applications, including ...

[Request Quote](#)



Lesson 5: Solar inverter oversizing vs. undersizing

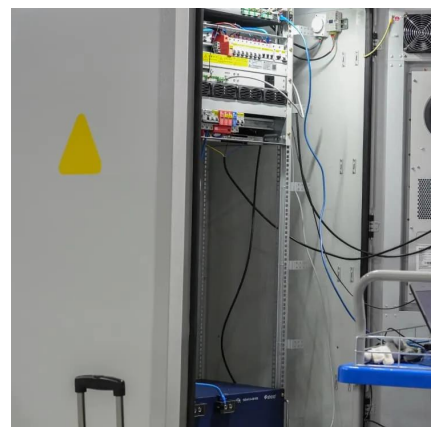
When you pair an inverter that is underrated for the amount of power the system is designed to generate, that's called undersizing. There is also a situation where it may make sense to pair ...

[Request Quote](#)

What Happens If Your Solar Edge Inverter Is Too Small

Undersizing an inverter can lead to inverter clipping, where the inverter is unable to handle the maximum output of the solar panels. This occurs when there is more DC power ...

[Request Quote](#)





[Why Can an Inverter Be Too Big for a Battery?](#)

When considering whether an inverter can be too big for a battery, it's essential to understand the implications of mismatched capacities. An oversized inverter may lead to inefficiencies, ...

[Request Quote](#)

[What Can a 4000 Watt Inverter Run - Complete Guide](#)

Discover what a 4000 watt pure sine wave inverter can run, including definitions, applicable equipment, appliance operating hours, ...

[Request Quote](#)



[How Big Of an Inverter Can My Car Handle , Expert Guide](#)

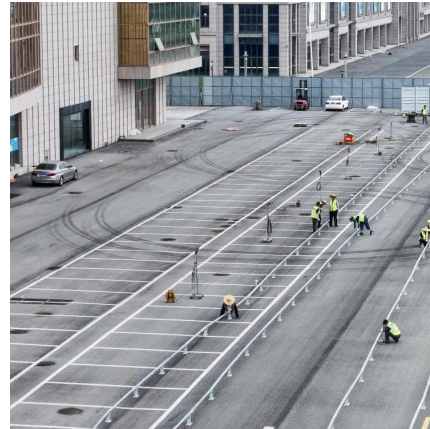
The inverter is the device that converts power from battery-powered electronics to the voltage used by your car (120 volts). The greater wattage an inverter can handle, the more devices ...

[Request Quote](#)

[Can an Inverter be Too Big for a Battery](#)

In conclusion, an inverter can be too big for a battery, and it's essential to choose the right inverter for your battery to avoid the risks and consequences associated with an oversized inverter.

[Request Quote](#)



[What Size Inverter Do I Need for My RV?](#)

An inverter that is too large for the battery bank can soon drain it and may not be properly powered by the batteries. The following is a general rule-of-thumb advice for using ...

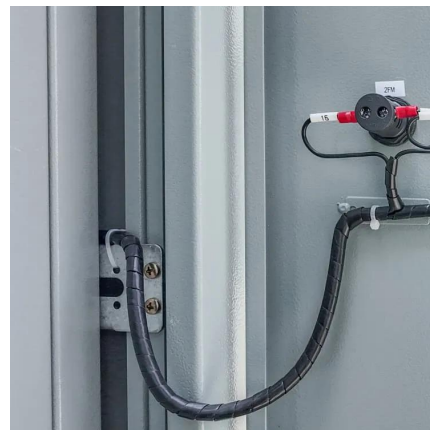
[Request Quote](#)



[Can An Inverter Be Too Big? - leaptrend](#)

Now, the question arises: can inverters be too powerful? The answer is yes. Opting for an inverter with excessive power capacity can lead to resource wastage and unnecessary cost. For ...

[Request Quote](#)



[How does the size of an inverter affect its performance](#)

Undersized Inverter: If the inverter is too small, it cannot handle the full output of the solar panels, leading to energy losses due to "clipping" during peak production times. This ...

[Request Quote](#)





What Happens If You Overload Your Inverter? Real Dangers and ...

This in-depth guide breaks down the symptoms, dangers, and long-term effects of pushing your inverter too hard. Learn how to calculate load, prevent overload, and fix issues if ...

[Request Quote](#)



Is my inverter too big? : r/SolarDIY

Having a big inverter and not using it means it will discharge the battery quicker just by being on. For use with a decently sized fridge 1.5kW would be the minimum to be able to handle the ...

[Request Quote](#)

Can An Inverter Be Too Big?

Inverters have to be sized for sufficient operational wattage and cope with surge loads for short periods. More often, the size of an inverter is ...

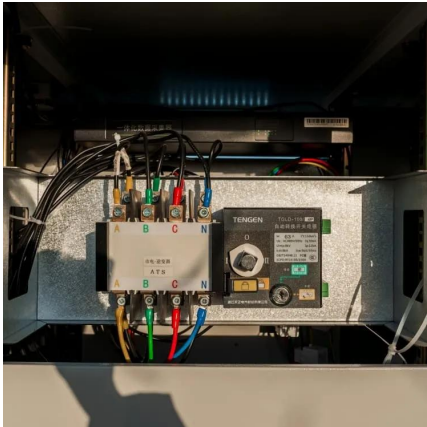
[Request Quote](#)



The Only Inverter Size Chart You'll Ever Need

We created a comprehensive inverter size chart to help you select the correct inverter to power your appliances. The need for an inverter size chart first became apparent ...

[Request Quote](#)



[Solar Panel Inverter Size Calculator](#)

Getting the 12v inverter size calculator, solar inverter calculation formula, and inverter sizing for pv system right is key. It makes sure the inverter can handle the power ...

[Request Quote](#)



[What Happens If Your Inverter Is Too Big? Risks, Solutions](#)

An oversized power inverter can undermine the efficiency, cost-effectiveness, and longevity of your power system. While it might seem like a "safer" choice, improper sizing leads to hidden ...

[Request Quote](#)

[What Happens If Your Inverter Is Too Big? Risks, ...](#)

While it might seem like a "safer" choice, improper sizing leads to hidden pitfalls. Here's a detailed breakdown of the risks, solutions, and answers to critical ...

[Request Quote](#)





Contact Us

For catalog requests, pricing, or partnerships, please visit:
<https://espaciovet.es>