

Is the green communication base station outdoors





Overview

Are green cellular base stations sustainable?

This study presents an overview of sustainable and green cellular base stations (BSs), which account for most of the energy consumed in cellular networks. We review the architecture of the BS and the power consumption model, and then summarize the trends in green cellular network research over the past decade.

What is a green base station solution?

The green base station solution involves base station system architecture, base station form, power saving technologies, and application of green technologies. Using SDR-based architecture and distributed base stations is a different approach to traditional multiband multimode network construction.

What should a base station do in a wireless communications network?

In a wireless communications network, the base station should maintain high-quality coverage. It should also have the potential for upgrade or evolution. As network traffic increases, power consumption increases proportionally to the number of base stations. However, reducing the number of base stations may degrade network quality.

What are the approaches to power management for wireless base stations?

The authors provide an overview of the existing approaches of power management for wireless base stations, which include base station power control through beamforming, base station assignment based on the dynamic connectivity patterns between mobile units and base stations, smart mode switching, and cooperative relaying.

What is a green communication initiative?

The green communication initiative primarily aims to improve the energy efficiency, reduce the OPEX, and eliminate the GHG emissions of BSs to



guarantee their future evolution [2, 3]. Cellular network operators attempt to shift toward green practices using two main approaches.

What is the impact of base stations?

The impact of the Base Stations comes from the combination of the power consumption of the equipment itself (up to 1500 Watts for a nowadays macro base station) multiplied by the number of deployed sites in a commercial network (e.g. more than 12000 in UK for a single operator).



Is the green communication base station outdoors



[Best base station location with a given area as an example](#)

Site selection is an important part of communication network planning. Establish a network of communication base station in a certain position often depends on the environment and ...

[Request Quote](#)

[Green and Sustainable Cellular Base Stations: An](#)

This study presents an overview of sustainable and green cellular base stations (BSs), which account for most of the energy consumed in ...

[Request Quote](#)



Resource management in cellular base stations powered by ...

This paper aims to consolidate the work carried out in making base station (BS) green and energy efficient by integrating renewable energy sources (RES). Clean and green ...

[Request Quote](#)



Research on ventilation cooling system of communication base stations

To meet the design requirements of the green



base stations [21], [22] and reduce operation cost of base station, this paper focuses on the effects of building structural design ...

[Request Quote](#)



Multi-objective cooperative optimization of communication base station

This paper develops a method to consider the multi-objective cooperative optimization operation of 5G communication base stations and Active Distribution Network ...

[Request Quote](#)



Military Communication

The standalone 4G LTE Manpack Base Station provides a quick and smart network for voice, data, video, and Position Location for Information Services ...

[Request Quote](#)



Green and Sustainable Cellular Base Stations: An Overview and ...

Energy efficiency and renewable energy are the main pillars of sustainability and environmental compatibility. This study presents an overview of sustainable and green cellular ...

[Request Quote](#)



Integrated Environment Sensing and Green Communication for ...

With the proposed method, a terrestrial base station (BS) or a UAV can be aware of the deployed environments and use the shadowing features to determine the proper transmitted power. It ...

[Request Quote](#)



Energy-Efficient Base Stations , part of Green Communications

In order to effectively improve the energy efficiency of the future mobile networks, it is thus important to focus the attention on the Base Station.

[Request Quote](#)



Green Communications: A Review of the Current Situation

User's power allocation and scheduling are optimized on a group of coordinated base stations on maximum transmission of power (either base station or per sub-carrier). A ...

[Request Quote](#)



Green Base Station Solutions and Technology

SDR-based BBU+RRU base stations have been deployed globally, and with their environmental protection features, have won the trust ...

[Request Quote](#)



[Energy-efficient 5G for a greener future](#)

Compared to earlier generations of communication networks, the 5G network will require more antennas, much larger bandwidths and a higher density of base stations. As a ...

[Request Quote](#)



The Green Base Station , VDE Conference Publication , IEEE ...

In times of steadily increasing energy costs and with the vanishing resources of the classic, non-regenerative energy sources, we see the challenge of finding new solutions ...

[Request Quote](#)

[Green Base Station Solutions and Technology](#)

SDR-based BBU+RRU base stations have been deployed globally, and with their environmental protection features, have won the trust of global users. However, innovation in ...

[Request Quote](#)





[Advanced Mobile Outdoor Base Stations for Smart ...](#)

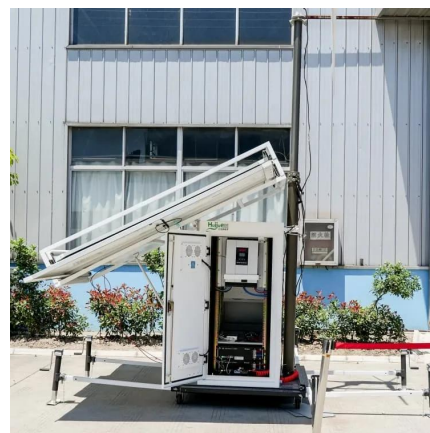
The mobile outdoor base station has emerged as a pivotal solution in the evolution of modern communication networks, addressing mobility and ...

[Request Quote](#)

Recommended 5 GMRS Base Stations

Choose the best GMRS base station for your communication needs using my comprehensive guide with top recommendations and ...

[Request Quote](#)



Communication Base Station Green Energy , Huijue Group E-Site

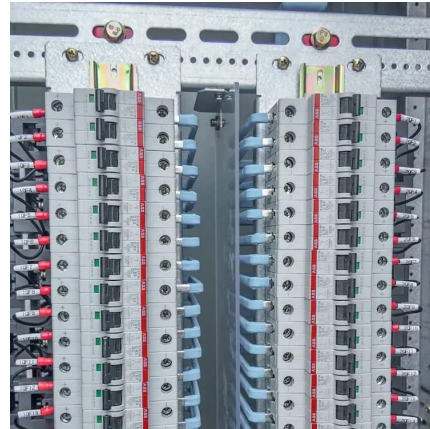
First, green energy solutions face intermittency issues - solar panels can't guarantee 24/7 uptime during monsoon seasons. Second, legacy infrastructure lacks smart energy routing capabilities.

[Request Quote](#)

[Green and Sustainable Cellular Base Stations: An](#)

This study presents an overview of sustainable and green cellular base stations (BSs), which account for most of the energy consumed in cellular networks.

[Request Quote](#)



Products

Compact while having an impact, these outdoor and indoor base stations are ideal for rural and urban deployments due to the incredible Non-Line-of-Sight ...

[Request Quote](#)



[Green Communications , Engineering And Technology Journal](#)

In a wireless network base station, power consumption is the biggest issue. With global warming and energy crises becoming the most compelling environmental challenges, green solutions ...

[Request Quote](#)



Optimizing the ultra-dense 5G base stations in urban outdoor ...

We coupled heuristic algorithm with GIS to maximize the service coverage of 5G base stations. A service coverage model is designed to spatially explicit simulate the ...

[Request Quote](#)

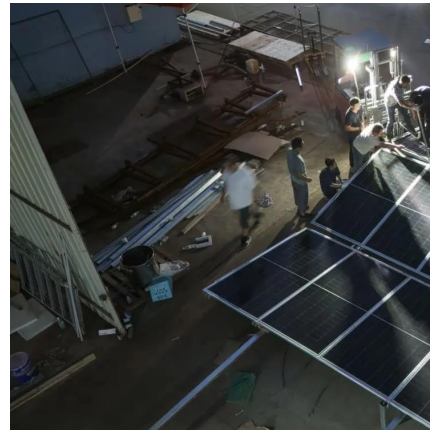




10

About 60% - 80% originates from wireless base stations (BSs) [2]. As current cellular network architectures are designed to cope with peak load and degraded conditions, ...

[Request Quote](#)



[China Mobile Outdoor Communication Base Station ...](#)

China Mobile Outdoor Communication Base Station Service Project GOTTOGPOWER's tens of thousands of outdoor UPS integrated cabinets ...

[Request Quote](#)



WBS510 , 5GHz 300Mbps Outdoor Wireless Base Station , TP-Link

TP-LINK's 5GHz 300Mbps * Outdoor Wireless Base Station is specifically designed to provide an effective solution for outdoor wireless networking applications. With its ...

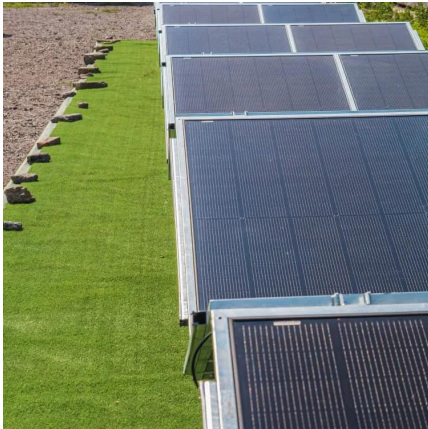
[Request Quote](#)



Experimental Study on Heat Transfer Performance of Separated ...

The separated heat pipe heat exchanger can replace air-conditioning in communication base stations and effectively reduce the energy consumption of base station heat dissipation ...

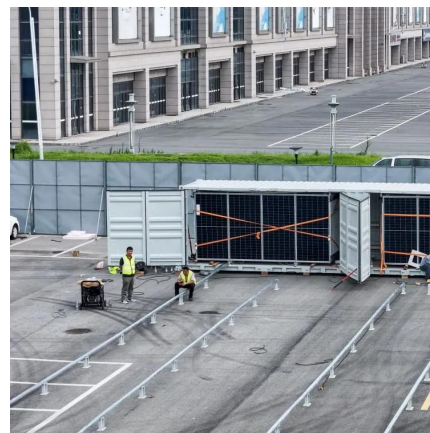
[Request Quote](#)



Green Radio Communication Networks

When a base station's energy supply is derived from renewable energy sources in a smart power grid, it is important to determine how this would be best used for communications.

[Request Quote](#)



Contact Us

For catalog requests, pricing, or partnerships, please visit:
<https://espaciovet.es>