

Location of the base station battery pack





Overview

How many batteries does the base station take?

The Base Station takes four (4) 1.2V, 1300mAh nickel-metal hydride (NiMH) rechargeable batteries. Regular alkaline batteries should never be inserted into the Base Station, as they may damage the device. Once you have acquired the necessary NiMH rechargeable batteries, you can follow the steps below to replace them:.

How do you replace a battery in a base station?

To replace batteries in a SimpliSafe base station, rotate the base counterclockwise (CCW) to remove it, then remove the batteries and replace them while ensuring the (-) and (+) orientation. When disposing of NiMH batteries, they should be recycled.

Where is the battery compartment located?

To remove the battery from your SimpliSafe Base Station, first locate the battery compartment on the bottom of the device. Once you've identified this area, proceed with the removal process using a small Phillips head screwdriver.

What type of batteries are used in the base station?

Inside the bottom of the base station are QTY (4) AA nickel-metal hydride rechargeable batteries (abbreviated NiMH or Ni-MH). Note, being RECHARGEABLE, there is a good chance that if you just keep the power on for several hours, they will be recharged.

What makes a telecom battery pack compatible with a base station?

Compatibility and Installation Voltage Compatibility: 48V is the standard voltage for telecom base stations, so the battery pack's output voltage must align with base station equipment requirements. Modular Design: A modular structure simplifies installation, maintenance, and scalability.



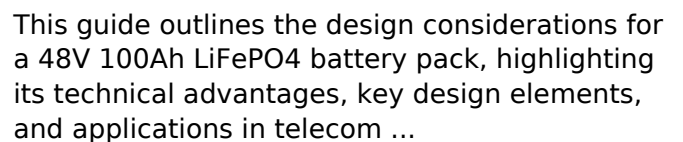
Where is the battery compartment on a SimpliSafe base station?

The battery compartment on a SimpliSafe base station can usually be found on the bottom. This is where the magic happens when it comes to removing the battery.



This topic introduces the concept of base station operation, provides information to help you identify good setup locations, describes best practices for setting up the equipment, and ...

I am moving and want to disable the base station by removing the batteries. How do I do that on the Gen 3? They don't seem to be in the base like the older model.



Can provide the background and authorized mobile phone to view the location of the battery pack and lock the battery pack in real time.



Customized size and electrical parameters to meet ...

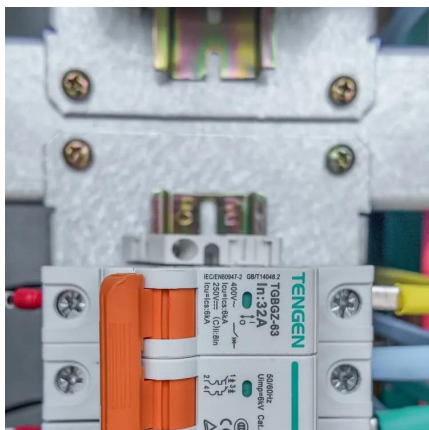
[Request Quote](#)



[Installation and hardware , Base Help Center](#)

Where can the battery system be installed? What are the electrical and spacing requirements for Base equipment? What do I need to know on the day of installation? Will I need a soft-start on ...

[Request Quote](#)



Ring alarm basestation gen1 new backup battery , Ring Community

I've been trying to look online to buy a new back up battery for my Ring Alarm Basestation. Because I couldn't find it I've been chatting with support and they advised me to ...

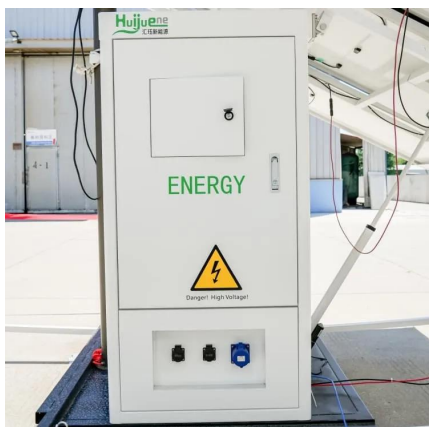
[Request Quote](#)



How to Remove SimpliSafe Base Station Battery? (Step-by-Step ...

To remove the battery from the SimpliSafe base station, start by unplugging the power adapter. Then, press the latch at the top of the base station and lift the cover to access the battery ...

[Request Quote](#)





[How to Remove Battery from SimpliSafe Base Station](#)

Learn the step-by-step process to safely remove the battery from your SimpliSafe Base Station. Ensure your security system stays functional and efficient.

[Request Quote](#)



[How to Remove SimpliSafe Base Station Battery?](#)

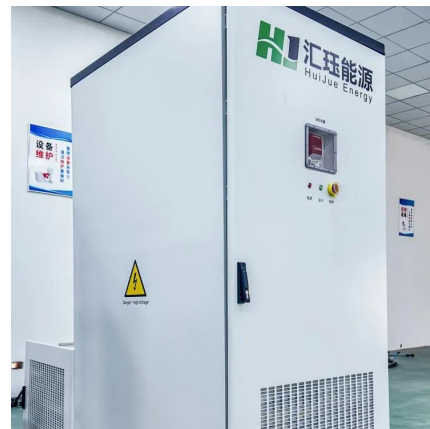
To remove the battery from the SimpliSafe base station, start by unplugging the power adapter. Then, press the latch at the top of the base station and lift the ...

[Request Quote](#)

?Changing batteries in base station , SimpliSafe Support Home

Changing batteries in base station Is there a manual, with photos or step by step instructions, showing how to replace the battery in the base station? I had a power outage and ...

[Request Quote](#)



How To Replace Base Station Batteries , SimpliSafe Support Home

The Base Station takes four (4) 1.2V, 1300mAh nickel-metal hydride (NiMH) rechargeable batteries. Regular alkaline batteries should never be inserted into the Base Station, as they ...

[Request Quote](#)



[Upgrading or Replacing Your Ring Alarm Base Station](#)

We've made it easier to replace and upgrade your Base Station from a Ring Alarm to the Ring Alarm Pro version. The app will help you save all of your existing Ring Alarm devices and ...

[Request Quote](#)



Long-Lasting 48V 100Ah LiFePO4 Battery Pack for Telecom, ...

Telecom Base Stations: Ensure uninterrupted operation of your 5G base station with this long-lasting and dependable LiFePO4 battery pack. Uninterruptible Power Supply (UPS): Provide ...

[Request Quote](#)

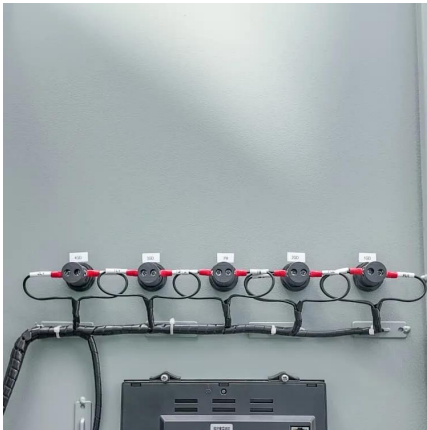


Battery Replacement Instructions

At the Base, key in your Security Code and tap the Disarm icon. In the ADT+ app: Log in to the app. On the Dashboard, tap the Disarm System button, then enter your security ...

[Request Quote](#)





[Base station energy storage battery installation](#)

A base station energy storage battery is a crucial component of telecommunication infrastructure, designed to improve the efficiency and reliability of network operations.

[Request Quote](#)

Base station operation guidelines

If semi-permanent or permanent operation is required, however, the modular receiver delivers significant advantages. Base station setup guidelines For good performance, observe the ...

[Request Quote](#)



[Telecom Base Station Backup Power Solution: Design ...](#)

This guide outlines the design considerations for a 48V 100Ah LiFePO4 battery pack, highlighting its technical advantages, key design ...

[Request Quote](#)

[Technical Specifications for Ring Alarm Devices](#)

Technical Specifications for Ring Alarm Devices
Learn more about key technical specifications for Ring Alarm Devices like compatibility and battery life to ensure your Ring of Security performs ...

[Request Quote](#)



[Power your scooter, RV or base station with long-lasting](#)

61 Likes, TikTok video from Liao (@liao.batterypack): "Power your scooter, RV or base station with long-lasting energy. #Yuchai #Weichai #dieselgeneratorset #Start #Power #generatorset ...

[Request Quote](#)



[Top Echo Dot Battery Base Options for Every Generation](#)

Discover the best Echo Dot Battery Base for each generation. Make your Alexa portable and enjoy the freedom of a cord-free experience.

[Request Quote](#)



?Changing batteries in base station , SimpliSafe Support Home

We can replace those batteries with actual NiMH rechargeables at no cost! It's actually pretty simple. You have to remove the power cord which will reveal a single screw on ...

[Request Quote](#)

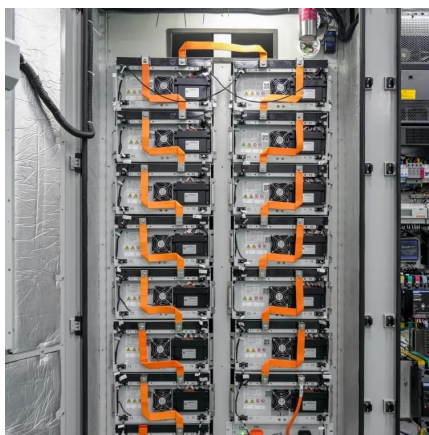




Recommended 5 GMRS Base Stations

Choose the best GMRS base station for your communication needs using my comprehensive guide with top recommendations and ...

[Request Quote](#)



[How To Replace Base Station Batteries, SimpliSafe ...](#)

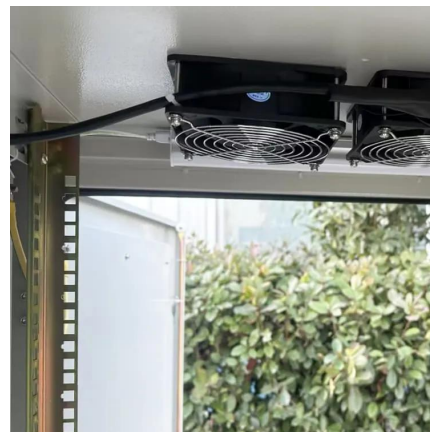
The Base Station takes four (4) 1.2V, 1300mAh nickel-metal hydride (NiMH) rechargeable batteries. Regular alkaline batteries should never be inserted ...

[Request Quote](#)

[How to Remove Battery from SimpliSafe Base Station](#)

Learn the step-by-step process to safely remove the battery from your SimpliSafe Base Station. Ensure your security system stays functional ...

[Request Quote](#)



Contact Us

For catalog requests, pricing, or partnerships, please visit:
<https://espaciovet.es>