

Photovoltaic module size double glass





Overview

Double-glass solar modules are made up of two layers of tempered glass that cover both sides of the solar panel. As snow accumulates on a typical solar panel or people stomp on it (during installation), the solar cells bend dramatically, resulting in microcracks on the cells.

There is a clear distinction between single and double glass solar panels. This difference should be clear by this- .

The front surface of double glass mono solar cells has an emitter layer and the back side has a dark covering. Passivated Emitter and Rear.

Typically, solar panels have a front glass panel and a back plastic sheet. These single-sided glass panels are supported by frames across the.

What is a double glass (Dual Glass) solar panel?

A double glass (Dual Glass) solar panel is a glass-glass module structure where a glass layer is used on the back of the modules instead of the traditional polymer backsheet. Double glass solar panels were originally heavy and expensive, but the lighter polymer backing panels gained most of the market share.

What is the difference between double-glass solar panels and single-sided solar panels?

The main difference between double-glass photovoltaic modules and single-sided glass solar panels lies in their construction and design, which can impact their durability, performance, and applications. Construction: Double-glass modules consist of two layers of glass sandwiching the solar cells and other components.

What is a double-glass module?

Double-glass modules are characterized by increased reliability, especially for large-scale photovoltaic projects. They include better resistance to higher temperatures, humidity and UV conditions, and have better mechanical stability, reducing the risk of microcracks during installation and operation.



Are double-glass modules better than single-sided glass panels?

However, advancements in glass technology have mitigated this issue to some extent. **Weight:** Double-glass modules are generally heavier than single-sided glass panels due to the additional glass layer. **Applications:** Double-glass modules are well-suited for environments with harsh weather conditions, high humidity, or corrosive elements.

What are the different types of photovoltaic modules?

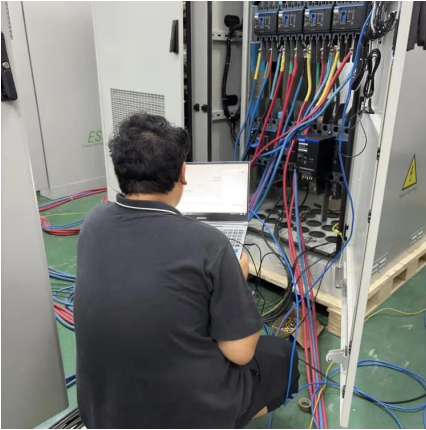
Two types of photovoltaic module structures coexist: Glass-polymer film (also called glass-backsheet) type modules. They are made of glass on the front side and polymer film on the rear side.

Why should you choose glass in a PV module?

The choice of glass in a PV module has become a key consideration in efforts to improve durability in the face of extreme weather conditions.



Photovoltaic module size double glass



[What is the solar panel thickness in 2020?](#)

3. Now the new double glass /bifacial solar panel is becoming more and more popular because of its high power. But the solar glass is ...

[Request Quote](#)

Transparent Solar PV Glass

PS-CT-series Transparent see-through Cadmium Telluride (CdTe) thin-film Photovoltaic technology. Colourless/grey/black pixelated appearance. ...

[Request Quote](#)



[The Difference Between Double-glass and Single ...](#)

In summary, the choice between double-glass photovoltaic modules and single-sided glass solar panels depends on factors such as the ...

[Request Quote](#)

Glass-Glass Solar Panel Technology

Double-sided PV modules inherit all the advantages of mono PERC modules: high power density resulting in significant BOS savings, high



energy yield with ...

[Request Quote](#)



Silk Nova Duetto

The new n-type Silk® Nova Duetto high efficiency glass/glass double-sided panel with 156 half-cut cells, with a power range from 615 to 625 Watts, completes the FuturaSun model range.

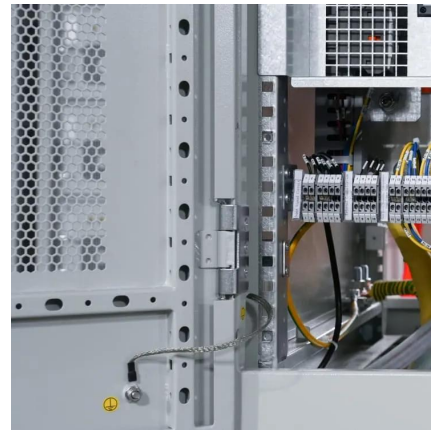
[Request Quote](#)



[A Comprehensive Guide to Bifacial Solar Panels](#)

Bifacial solar panels produce solar power from both sides and deliver up to 30% more energy, but are they worth it? Let's find out.

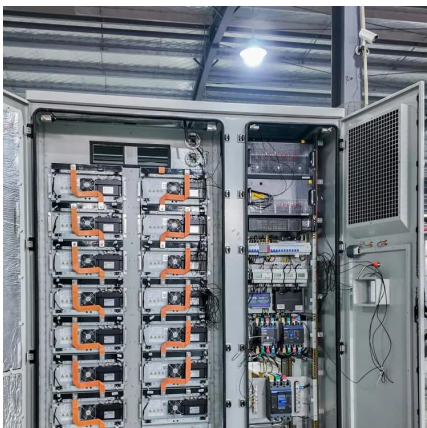
[Request Quote](#)



What are Double Glass Solar Panels?

Double-glass solar modules are made up of two layers of tempered glass that cover both sides of the solar panel. As snow accumulates on a typical solar panel or people ...

[Request Quote](#)





The Difference Between Double-glass and Single-sided Glass ...

The main difference between double-glass photovoltaic modules and single-sided glass solar panels lies in their construction and design, which can impact their durability, ...

[Request Quote](#)



[Double glass solar module , Maysun Solar](#)

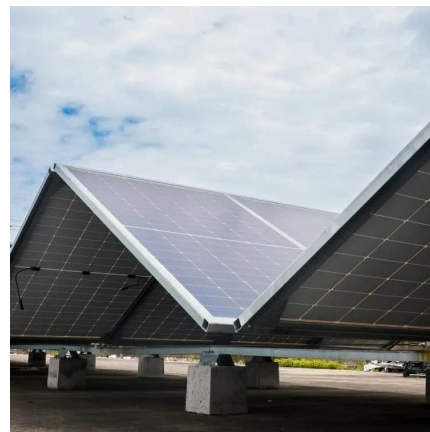
Double glass modules use an innovative design with glass on both sides, offering higher photovoltaic conversion efficiency and better environmental ...

[Request Quote](#)

[720W 210mm 132 Cells Double Glass Bifacial HJT ...](#)

INTRODUCTION Bluesun 720W Bifacial Half Cell Solar Panel, featuring the latest TOPCon N-Type technology. Designed for business applications, this panel ...

[Request Quote](#)



[Technical properties of Onyx Solar Photovoltaic Glass](#)

The multifunctional properties of photovoltaic glass surpass those of conventional glass. Onyx Solar photovoltaic glass can be customized to optimize its ...

[Request Quote](#)



Glass-Glass Solar Panel Technology

Double-sided PV modules inherit all the advantages of mono PERC modules: high power density resulting in significant BOS savings, high energy yield with better performance in low light and ...

[Request Quote](#)



[Double Glass Solar Panel Thickness Guide: Find Your ...](#)

Compare double glass solar panel thickness configurations for international projects. Includes custom small-format options under 200W for ...

[Request Quote](#)



Glass-Glass PV Modules

Double-glass modules boast increased reliability, especially for utility scale PV projects. These include better resistance to higher temperatures, humidity and ...

[Request Quote](#)





[Double glass solar module , Maysun Solar](#)

Double glass modules use an innovative design with glass on both sides, offering higher photovoltaic conversion efficiency and better environmental characteristics.

[Request Quote](#)

Single-glass versus double-glass: a deep dive into module ...

Double-glass modules, with their performance in the face of salt mist, high temperatures and high humidity, have won the market's favour. However, this trend is not ...

[Request Quote](#)



[What is the Double Glass Photovoltaic Solar Panel?](#)

Glass-glass module structures (Dual Glass or Double Glass) is a technology that uses a glass layer on the back of the modules instead of the traditional ...

[Request Quote](#)



What is the Double Glass (Dual Glass) Photovoltaic Solar Panel?

What is the Double Glass Photovoltaic Solar Panel? Glass-glass module structures (Dual Glass or Double Glass) is a technology that uses a glass layer on the back of the ...

[Request Quote](#)



[Double the strengths, double the benefits](#)

While double glass modules offer numerous benefits, it's essential to consider factors such as weight and installation requirements. ...

[Request Quote](#)



[Transparent Solar Panels: Reforming Future Energy Supply](#)

What are transparent solar panels? Photovoltaic glass is probably the most cutting-edge new solar panel technology that promises to be a game-changer in expanding ...

[Request Quote](#)



[Double the strengths, double the benefits](#)

While double glass modules offer numerous benefits, it's essential to consider factors such as weight and installation requirements. Advancements in manufacturing have led ...

[Request Quote](#)





The Difference Between Double-glass and Single-sided Glass ...

In summary, the choice between double-glass photovoltaic modules and single-sided glass solar panels depends on factors such as the intended application, environmental ...

[Request Quote](#)



580W Solar Panel, Dual Glass Solar Panels

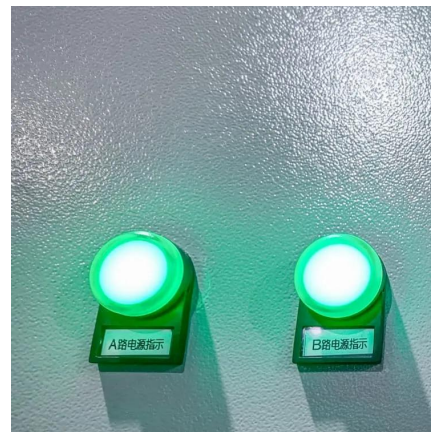
Anern N-type double glass solar panels are the latest high-efficiency solar panels on the market. Double-sided output, rear side power gain, increase power ...

[Request Quote](#)

What is the Double Glass (Dual Glass) Photovoltaic ...

What is the Double Glass Photovoltaic Solar Panel? Glass-glass module structures (Dual Glass or Double Glass) is a technology that uses a ...

[Request Quote](#)



TOPCon Dual Glass 570W 580W 585W Solar Panels ...

Upgrade your project with Sunpal's N-type TOPCon bifacial double glass 555W 560W 565W 570W 575W 580W 585W solar modules at factory prices.

[Request Quote](#)



Double Glass Solar Panel Thickness Guide: Find Your Perfect ...

Compare double glass solar panel thickness configurations for international projects. Includes custom small-format options under 200W for specialized global applications.

[Request Quote](#)



[What are the advantages of dual-glass Dualsun modules?](#)

Dual-glass type modules (also called double glass or glass-glass) are made up of two glass surfaces, on the front and on the rear with a thickness of 2.0 mm each.

[Request Quote](#)

[Single Glass Vs Double Glass Solar Panels , Best ...](#)

In simple words, a solar panel is a photocell or sensitive sheet that absorbs sunlight and generates electricity from it. These panels are of two ...

[Request Quote](#)





Glass-Glass PV Modules

Double-glass modules boast increased reliability, especially for utility scale PV projects. These include better resistance to higher temperatures, humidity and UV conditions and have better ...

[Request Quote](#)

[JinkoSolar: Transparent backsheet vs dual glass](#)

Transparent backsheet can successfully decrease module weight and the difference between the glass-transparent backsheet module and the dual glass alternative ...

[Request Quote](#)



Contact Us

For catalog requests, pricing, or partnerships, please visit:
<https://espaciovet.es>