

Three or four degrees outdoor power supply





Overview

What is a Class 3 power supply?

Class III - where the input is connected to a safety extra-low voltage (SELV) circuit meaning no further protection, such as earthing, is required. Download [Your Essential Guide to Power Supplies](#) - a must-have technical resource for system designers.

What are the safety standards for power supplies?

The three main safety standards for power supplies (IEC 60950-1, IEC 60601-1 and IEC 61010-1) all call up pollution degree classifications, and in general the wording is similar. Pollution Degree 1 is the least stringent. It applies where there is no pollution or only dry, non-conductive pollution.

What is a 'pollution degree' for a power supply?

By “pollution”, we mean contaminants such as condensation, water and a variety of dusts. The three main safety standards for power supplies (IEC 60950-1, IEC 60601-1 and IEC 61010-1) all call up pollution degree classifications, and in general the wording is similar. Pollution Degree 1 is the least stringent.

How does a power supply protect the ground?

Power supplies fall into one of three protection classes, based on the need (or not) for a protective earth connection known as ‘earthing’. This works by providing a path for a faulty electrical current to flow to the ground, shielding users from shocks when equipment insulation fails.

Does a power supply need a safety ground conductor?

Protection is maintained by double or reinforced insulation, rather than relying on both protective earthing and basic insulation. In this way, IEC Class II power supplies are not mandated to have a safety ground conductor brought to the power supply.



What is pollution degree 3 & 4?

Applicable for products used in office environments, laboratories and test equipment. Pollution Degree 3 you would find in harsh industrial and farming, particularly with unheated rooms. Conductive pollution is to be expected, with or without condensation. Pollution Degree 4 is outdoor equipment.



Three or four degrees outdoor power supply



[Understanding the Diagram of a 3 Phase 4 Wire System](#)

A 3 phase 4 wire system is a versatile and efficient electrical distribution system that finds applications in various industries and settings. Whether it's in ...

[Request Quote](#)

[Understanding the Concept of a 3 Phase 4 Wire ...](#)

Its robust power delivery ensures uninterrupted healthcare services. Data Centers: Data centers, where large amounts of computer servers are housed, ...

[Request Quote](#)



[Single-Phase Power vs Three-Phase Power](#)

Both three-phase and single-phase devices can be powered from a three-phase supply. A three-phase circuit is a combination of three single ...

[Request Quote](#)

Class II power supplies explained

Power Guy provides guidance and considerations for choosing the power supply for reliable operation in dirty environments.



[Request Quote](#)



[Outdoor Power-supply System , NTT Technical Review](#)

The three main requirements that these emergency outdoor power supplies must meet are to: (1) supply power for extended periods, (2) withstand harsh ...

[Request Quote](#)

Altronix Products

Altronix WP3 is a UL Listed, NEMA 4/IP 66 Rated outdoor power supply/battery and accessory enclosure with a metal backplane. It can accommodate a wide variety of Altronix power ...

[Request Quote](#)



[Recommendation for outdoor USB power supply](#)

The 35W Dual USB-C Port Compact Power Adapter allows you to charge two devices at the same time, whether you're at home, in the office, or on the go. The compact ...

[Request Quote](#)





Outdoor Power-supply System , NTT Technical Review

Recognizing the rising awareness of the need for emergency preparedness mentioned earlier and the clear urgent need for power-supply components for disaster-response systems in outdoor ...

[Request Quote](#)



Outdoor

Extension cord misuse Match product power needs (on product labels and in manuals) to extension cord label information and make sure they are rated appropriately for outdoor use.

[Request Quote](#)



Pollution Degree Ratings for Power Supplies , Blogs

Pollution Degree 4 is outdoor equipment. Persistent conductivity, rain or even snow is the norm. Could a pollution degree 2 power supply be ...

[Request Quote](#)



Pollution Degree Ratings for Power Supplies , Blogs , TDK-Lambda

Pollution Degree 4 is outdoor equipment. Persistent conductivity, rain or even snow is the norm. Could a pollution degree 2 power supply be used in an outdoor application? Yes, ...

[Request Quote](#)



[Three-Phase AC Supplies High-Power Sources](#)

Learn about three-phase AC power configurations for AMETEK Programmable Power sources. Understand voltage connections for optimal ...

[Request Quote](#)



WayPoint Features

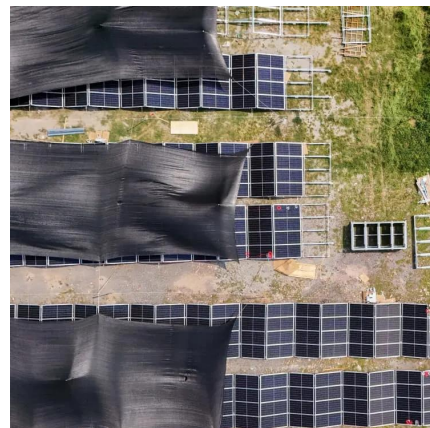
WayPoint is your rugged outdoor power solution. Provides outdoor power for surveillance and security systems. NEMA 4/4X, IP66-11 Rated enclosure for ...

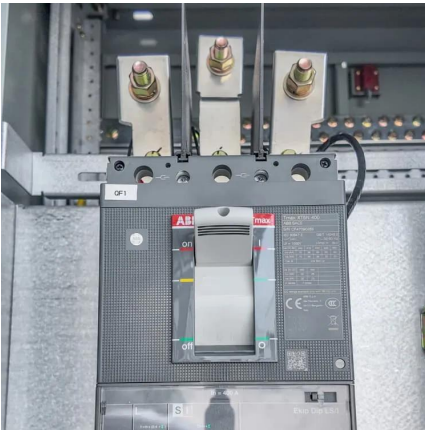
[Request Quote](#)

Class II power supplies explained

In understanding the three IEC Power Supply Protection Classes, you can identify and select the relevant power supply class based on safety requirements, regulations and pricing. If you have ...

[Request Quote](#)





Outdoor power supply

I'm working on installing my PA-II outdoors on a balcony. Ambient temperatures are typically around 70° but can peak in the 80-90° range. The area receives strong sun ...

[Request Quote](#)

Outdoor power supply

I'm working on installing my PA-II outdoors on a balcony. Ambient temperatures are typically around 70° but can peak in the 80-90° range. The area ...

[Request Quote](#)



SECTION 2: THREE-PHASE POWER FUNDAMENTALS

Power is delivered to a single-phase load with an impedance of at 120 V. Add power factor correction in parallel with the load to yield a power factor of 0.95, lagging.

[Request Quote](#)



The Power Plant: Three-phase Power

The power plant produces three different phases of AC power simultaneously, and the three phases are offset 120 degrees from each other. There are four ...

[Request Quote](#)



[Recommendation for outdoor USB power supply](#)

The 35W Dual USB-C Port Compact Power Adapter allows you to charge two devices at the same time, whether you're at home, in the office, or ...

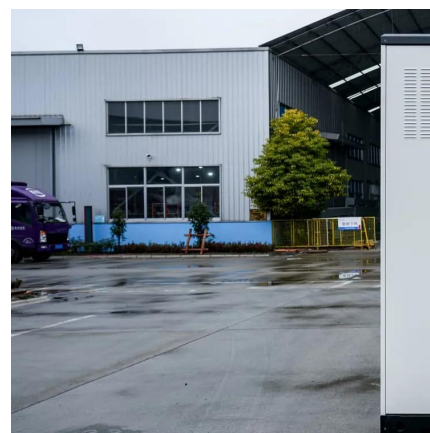
[Request Quote](#)



[Outdoor Power-supply System , NTT Technical Review](#)

Recognizing the rising awareness of the need for emergency preparedness mentioned earlier and the clear urgent need for power-supply components for ...

[Request Quote](#)



90 Degree Electrical Plug Adapter

Outdoor 3-Outlet Power Splitter. 90-Degree Flat Plug 1 to 3 Way Outlet Adapter SJTW 16AWG 3-Prong Power Cord Extension Strip with Outlet Cover for Holiday Decoration String Light

[Request Quote](#)



[Single-Phase vs. Three-Phase Power Explanation , Fluke](#)

Thus, three-phase power supplies, whether they have three wires or four, use less conductor material to transmit a set amount of electrical power than do single-phase power supplies. ...

[Request Quote](#)



WayPoint Features

WayPoint is your rugged outdoor power solution. Provides outdoor power for surveillance and security systems. NEMA 4/4X, IP66-11 Rated enclosure for outdoor use. Integral flanges and ...

[Request Quote](#)

Amazon : 3 Prong Power Plug

EP 2 Pack 3 Ft Flat Plug Appliance and Power Tool Cord, 14 Gauge 3 Prong 15A Replacement Power Supply Cord Cable, 110V 115V 120V AC Pigtail, White 50+ bought in past month

[Request Quote](#)



[WayPoint3 Outdoor Power Supply 12/24VDC, 2.5amp ...](#)

WayPoint-3 DC Outdoor Power Supply/Charger provides 12VDC or 24VDC and is designed to be conveniently located where power is required.

[Request Quote](#)



Choosing a power supply for reliable operation in dirty ...

Power Guy provides guidance and considerations for choosing the power supply for reliable operation in dirty environments.

[Request Quote](#)



WayPoint3 Outdoor Power Supply 12/24VDC, 2.5amp

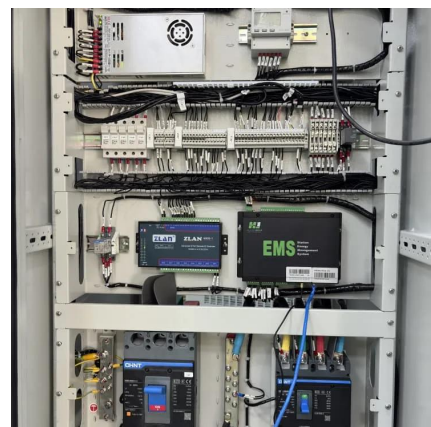
WayPoint-3 DC Outdoor Power Supply/Charger provides 12VDC or 24VDC and is designed to be conveniently located where power is required.

[Request Quote](#)

How Three-Phase Power Works , Salient

When discussing electricity, "Phase" refers to a power load's distribution. A circuit with two-wire alternating current (AC) uses single-phase power; one wire is the phase or power wire, while ...

[Request Quote](#)





[6' Indoor/outdoor Three Wire Power Cord/pigtail \(Straight Plug\)](#)

King Innovation's power cords are the perfect resource for multiple residential and commercial applications. They are approved for use indoors and outdoors and the plug is available with a ...

[Request Quote](#)

Contact Us

For catalog requests, pricing, or partnerships, please visit:
<https://espaciovet.es>