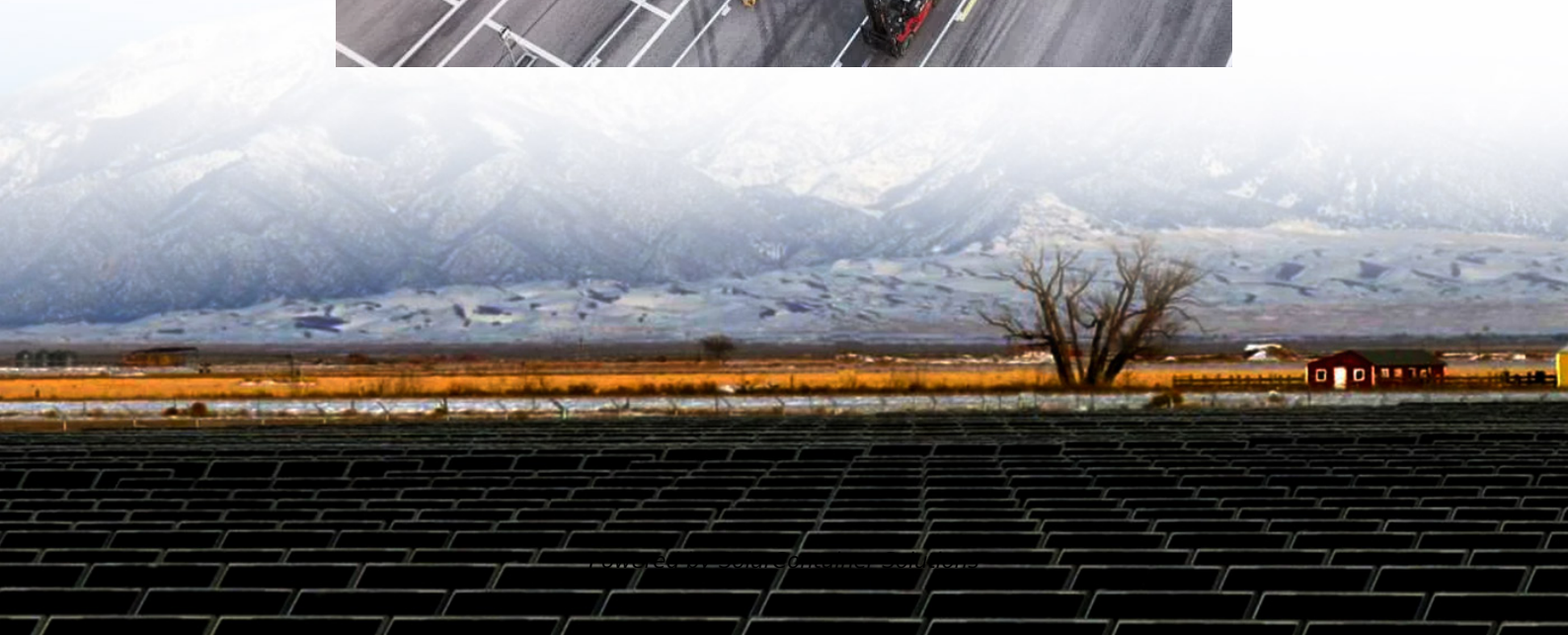


What are indoor and outdoor base stations





Overview

How many types of base stations are there?

Macro cell, Micro cell, Pico cell and Femto cell are 4 types of base stations in wireless communication networks. Macrocell antennas must be properly mounted on ground-based masts, rooftops or other existing structures and at heights for an unhindered, clear view of the surroundings.

What is an indoor base station?

Indoor base stations in rack format This is the most common type of base station, in which all its components are integrated in a rack-type cabinet, which provides more space for more modules or components. This can enable, for example, redundancy of all components, thereby improving system availability.

Where is a base station antenna located?

The base station antennas are usually placed on rooftops, in masts or on building walls. Antennas are sometimes also installed in shopping malls, airports, offices, and other places with many mobile phone users. Indoor antennas are usually placed on walls or on ceilings. Each base station can only serve a limited number of mobile devices at a time.

What are the functions of a base station?

2. Antenna: The base station has one or more antennas to transmit and receive signals. Antennas are responsible for radiating the signals into the air and capturing the signals from the air. 3. Baseband processing unit: It is responsible for processing the signals received from the transceiver.

What is an outdoor compact base station?

Outdoor compact base stations These base stations are designed for installation in any type of outdoor scenario. They offer a high degree of IP protection, which allows them to operate in the most adverse conditions (rain,



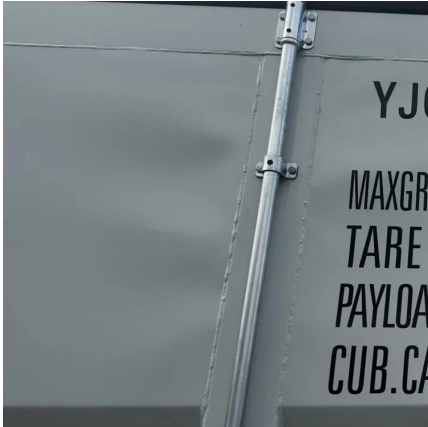
extreme heat, wind, humidity, saline environments.) without requiring an additional mechanical cover.

What is a base station in a cellular network?

A base station, also known as a cell site or cell tower, is an integral part of a cellular network. It serves as a central hub for communication between mobile devices and the network infrastructure. Here is a simplified explanation of how a base station works: 1.



What are indoor and outdoor base stations



Microsoft Word

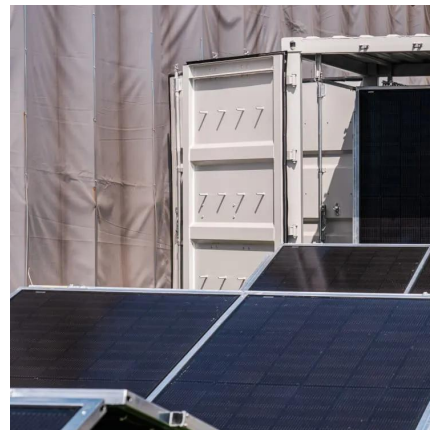
For outdoor deployments, the maximum power limit of up to 47dBm EIRP for outdoor CBRS base stations provides a significant boost for outdoor scenarios. Simply put, CBRS offers more ...

[Request Quote](#)

[In-Building DAS & Outdoor Small Cells -- M ...](#)

These small cells are smaller, low-power versions of the larger "macro" base stations with their own radios and antennas that can be deployed indoors or ...

[Request Quote](#)



[The 6 Best Home Weather Stations We've Tested](#)

The best home weather stations are accurate and user-friendly. We researched and tested options from top brands, such as Ambient Weather ...

[Request Quote](#)

X4000 5G RAN 'All-in-One' gNodeB

5G Small Cell indoor and outdoor 'all-in-one' radio access for private 5G wireless networks. 5G Small Cell Base Stations (Micro Cell, Femtocell)



offer advanced features and "stand alone" ...

[Request Quote](#)



[PRODUCT DATA SHEET RBS 6000 SERIES BASE STATIONS](#)

The enhanced Node B (eNodeB or eNB) is the base station component of the standards-defined LTE network. Motorola Public Safety LTE networks use the Ericsson RBS 6000 platform, a ...

[Request Quote](#)



4 types of Base stations

Macro cell, Micro cell, Pico cell and Femto cell are 4 types of base stations in wireless communication networks. Macrocell antennas must be properly ...

[Request Quote](#)



Base Stations

The present-day tele-space is incomplete without the base stations as these constitute an important part of the modern-day scheme of wireless communications. They are ...

[Request Quote](#)





Base Station Antennas at CB World!

CB World offers several indoor and outdoor base station antennas such as Omnidirectional Base Station Antennas, VHF Base Station Antennas, Yagi Antennas, Discone Antennas, and more!

[Request Quote](#)



Measurements of MIMO Indoor Channels at 1800 MHz with Multiple Indoor

This paper proposes several configurations for multiple base stations in indoor MIMO systems and compares their performance. The results are based on channel measurements realized ...

[Request Quote](#)

In-Building DAS & Outdoor Small Cells -- M-Communications

These small cells are smaller, low-power versions of the larger "macro" base stations with their own radios and antennas that can be deployed indoors or around a building where coverage is ...

[Request Quote](#)



Ericsson Cellular Base Stations

Legacy RBS 2000 Ericsson's earlier RBS lineup combined both indoor and outdoor base stations with options for single-sector and multiple-sector configurations. They continue to be added to ...

[Request Quote](#)



Base stations and networks

Outdoor CPE devices generally provide broader coverage, which is essential for rural areas and households located further away from a cell tower/base station. In contrast, ...

[Request Quote](#)



[Base station types: a solution for every deployment scenario](#)

There are different types of base stations, offering a wide variety of operating characteristics under different conditions, with a suitable solution for each type of scenario, but ...

[Request Quote](#)



[Indoor vs Outdoor CPE: Which is best? .. Solace Power](#)

Outdoor CPE devices generally provide broader coverage, which is essential for rural areas and households located further away from a cell tower/base station. In contrast, ...

[Request Quote](#)





[Excellent Coverage BaiCells Base Stations](#)

The sleek, elite-quality Base Stations offer enhanced indoor and outdoor coverage and are jam-packed with exceptional features. Find the BEST Base Station here.

[Request Quote](#)

TetraFlex® Outdoor BS422

With frequency sharing an indoor repeater system can be built without optical fibres. The same hardware can be used as base station and repeater unit, increasing redundancy and ...

[Request Quote](#)



Cellular 2G, 3G, 4G, 5G, LTE, & CBRS Base Station Antennas , PCTEL

Learn more about the robust base station antenna solutions from PCTEL designed for cellular applications supporting 2G-5G, LTE, & CBRS connectivity.

[Request Quote](#)



[Optimize Enterprise Communication with SIP-DECT](#)

Enhance your enterprise communication strategy with SIP-DECT base stations, ensuring robust connectivity and improved scalability for your business.

[Request Quote](#)



4 types of Base stations

Macro cell, Micro cell, Pico cell and Femto cell are 4 types of base stations in wireless communication networks. Macrocell antennas must be properly mounted on ground-based ...

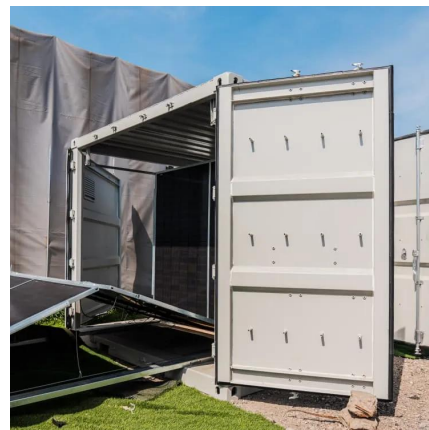
[Request Quote](#)



What Is A Base Station?

In summary, the base station is the active component responsible for network communication, while the tower is the physical structure that supports the base station.

[Request Quote](#)



[Alcatel-Lucent 4070 DECT Base Stations](#)

The Alcatel-Lucent 4070 DECT Base Station product family provides Digital Enhanced Cordless Telecom -munications (DECT) connectivity on the Alcatel-Lucent OmniPCXTM Enterprise ...

[Request Quote](#)





Base stations and networks

Mobile phones and other mobile devices require a network of base stations in order to function. The base station antennas transmit and receive RF (radio frequency) signals, or radio waves, ...

[Request Quote](#)



Nokia BTS Flexi

NOKIA BTS UltraSite-The flagship of Nokia Base Stations works on GSM 900, 1800, 1900 MHz and WCDMA 2GHz frequencies and can be used onOutdoor (Up to 12 TRXs) and Indoor (Up ...

[Request Quote](#)

X4000 5G RAN 'All-in-One' gNodeB

5G Small Cell indoor and outdoor 'all-in-one' radio access for private 5G wireless networks. 5G Small Cell Base Stations (Micro Cell, Femtocell) offer advanced ...

[Request Quote](#)



Measurements of MIMO Indoor Channels at 1800 MHz with Multiple Indoor

Both outdoor and indoor locations are considered for the transmitters or base stations, which allow the analysis of not only indoor but also outdoor-to-indoor environment.

[Request Quote](#)



Wyze Cam Outdoor Starter Bundle v2 (Includes Base Station and ...

Amazon : Wyze Cam Outdoor Starter Bundle v2 (Includes Base Station and 1 Cam), 1080p HD Indoor/Outdoor Wireless Smart Home Camera with Color Night Vision, 2 ...

[Request Quote](#)



[TETRA MTS1 Base Station Specification Sheet](#)

The MTS1 TETRA base station is a small, rugged and easily deployable solution for indoor and outdoor coverage applications. Based on a new high performance hardware platform, the ...

[Request Quote](#)



Contact Us

For catalog requests, pricing, or partnerships, please visit:
<https://espaciovet.es>