

What is the communication frequency of the communication base station





Overview

In communications, a base station is a communications station installed at a fixed location and used to communicate as part of one of the following: • a system, or; • a system such as or .

What is a base station in radio communications?

In radio communications, a base station is a wireless communications station installed at a fixed location and used to communicate as part of one of the following: a wireless telephone system such as cellular CDMA or GSM cell site. Base stations use RF power amplifiers (radio-frequency power amplifiers) to transmit and receive signals.

What frequency should a base station operate on?

2. Frequency: The base station should operate on a frequency that is compatible with the devices it will be communicating with. Common frequencies include 900 MHz, 1.8GHz, 2.1GHz, 2.4 GHz, 2.6GHz and 5 GHz ,etc.

How do mobile and base stations communicate?

Mobile and base stations communicate using radio frequency (RF) or electromagnetic waves. Specific RF frequencies are planned based on regional needs. For example, GSM uses the 900 MHz band. Two-way communication requires a frequency pair: one for the uplink (mobile to base station) and one for the downlink (base station to mobile).

Is a base station a transmitter or broadcast point?

Base stations are generally a transceiver, capable of sending and receiving wireless signals; otherwise, if they only transmitted signals out, they would be considered a transmitter or broadcast point. A base station will have one or more radio frequency (RF) antennas to transmit and receive RF signals to other devices.

What frequencies are used in base station antennas?



Some of the commonly used frequencies in base station antennas are discussed below. 700 MHz: This frequency is used for Long Term Evolution (LTE) networks and can provide good coverage and capacity.

How to choose a base station?

Frequency: The base station should operate on a frequency that is compatible with the devices it will be communicating with. Common frequencies include 900 MHz, 1.8GHz, 2.1GHz, 2.4 GHz, 2.6GHz and 5 GHz ,etc. 3. Power: The base station should have enough power to provide a strong and reliable signal.



What is the communication frequency of the communication base station



base station in 5g

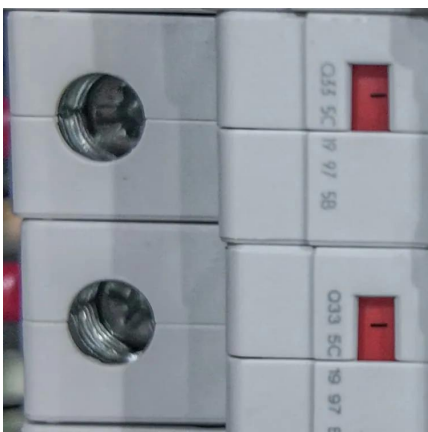
A 5G base station is a complex system that integrates advanced RF technology, digital signal processing, and network architecture to deliver high-performance wireless ...

[Request Quote](#)

What Is A Base Station?

Frequency: The base station should operate on a frequency that is compatible with the devices it will be communicating with. Common ...

[Request Quote](#)



Radio spectrum

Bands of frequencies, especially in the VHF and UHF parts of the spectrum, are allocated for communication between fixed base stations and land mobile vehicle-mounted or portable ...

[Request Quote](#)

[Cellular Communication Basics: A Tutorial](#)

Two-way communication requires a frequency pair: one for the uplink (mobile to base station)



and one for the downlink (base station to mobile). In GSM, 890 ...

[Request Quote](#)



[RTK and the Federal Communications Commission ...](#)

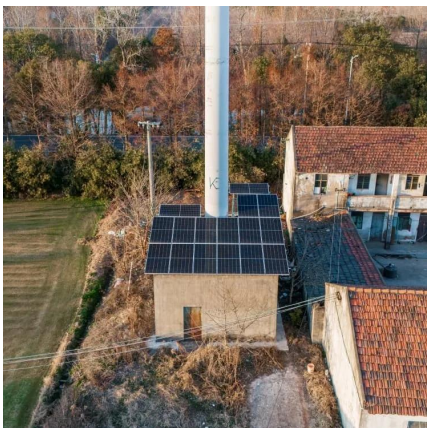
Here in the United States, the band for spread spectrum communication is 900 MHz. It is vital, of course, that the rover and the base station are tuned to the ...

[Request Quote](#)

[What is the Base Station Subsystem \(BSS\)?](#)

Radio Communication: The BSS establishes and maintains radio communication with mobile devices (MS) within its coverage area. It manages the radio channels and ...

[Request Quote](#)



EMF

A base station is made up of antennas connected by cable to electronic (radio) equipment usually housed in a room or 'shelter'. Some base stations have radio communications dishes (shaped ...

[Request Quote](#)



[Do You Need A Base Station For Two-Way Radio ...](#)

A control station is a base station that relies on a repeater for communication. A repeater is a base station that connects to all hand-held ...

[Request Quote](#)



Base Stations

Frequency Allocation: The base stations are responsible for assigning frequencies to various users within an area of which they have control. This prevents conflicts between ...

[Request Quote](#)

[Cellular Communication Basics: A Tutorial](#)

Two-way communication requires a frequency pair: one for the uplink (mobile to base station) and one for the downlink (base station to mobile). In GSM, 890 to 915 MHz is used for the uplink, ...

[Request Quote](#)



[Base Station Antenna Frequency Selection](#)

When selecting a base station antenna, understanding the frequency range is crucial for achieving optimal network coverage. This article will explore how to choose the appropriate frequency ...

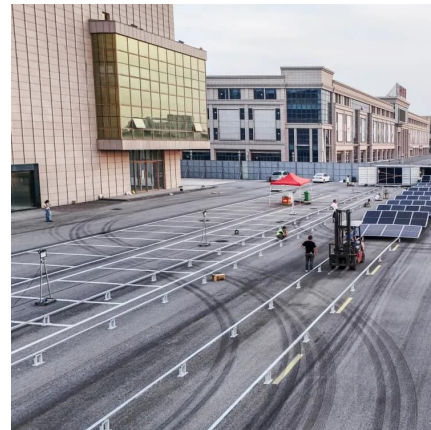
[Request Quote](#)



What Is the Role of a Base Station in Wireless Communication?

Introduction to Base Stations in Wireless Communication Base stations are critical components in wireless communication networks, serving as the intermediary between mobile ...

[Request Quote](#)



[What Are Base Station Antennas? Complete Guide](#)

Base station antennas are available in different shapes and sizes and can be either omnidirectional antennas or directional antennas. The operating frequency, coverage ...

[Request Quote](#)

[High Frequency Global Communications System](#)

The High Frequency Global Communications System (HFGCS) is a network of single sideband shortwave transmitters of the United States Air Force which is used to communicate with ...

[Request Quote](#)





What is a base station?

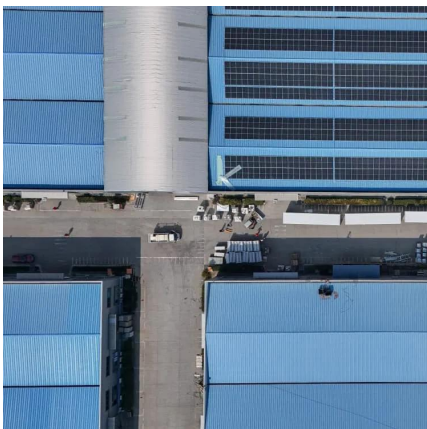
A base station will have one or more radio frequency (RF) antennas to transmit and receive RF signals to other devices. Base stations are also central points that all clients ...

[Request Quote](#)

Frequency Reuse

Answer: a Explanation: Neighbouring base stations are assigned different group of channels. It minimizes the interference between base stations and the users ...

[Request Quote](#)



What Is A Base Station?

Frequency: The base station should operate on a frequency that is compatible with the devices it will be communicating with. Common frequencies include 900 MHz, 1.8GHz, ...

[Request Quote](#)

Base station

In radio communications, a base station is a wireless communications station installed at a fixed location and used to communicate as part of one of the ...

[Request Quote](#)



[How does a ground station for space communication ...](#)

Ground station for space communication is a crucial component of ground segment, serving to complement and support space missions.

[Request Quote](#)



Base station

OverviewWireless communicationsLand surveyingComputer networkingSee also

In radio communications, a base station is a wireless communications station installed at a fixed location and used to communicate as part of one of the following: o a push-to-talk two-way radio system, or;o a wireless telephone system such as cellular CDMA or GSM cell site.

[Request Quote](#)



[What Are Base Station Antennas? Complete Guide](#)

Base station antennas are available in different shapes and sizes and can be either omnidirectional antennas or directional antennas. The ...

[Request Quote](#)



VHF Base Stations for Long-Range Communication

What Is a VHF Base Station? A VHF (Very High Frequency) base station is a fixed communication device that operates within the 30 MHz to 300 MHz frequency range.

[Request Quote](#)



Understanding the Base Station Subsystem: A Comprehensive ...

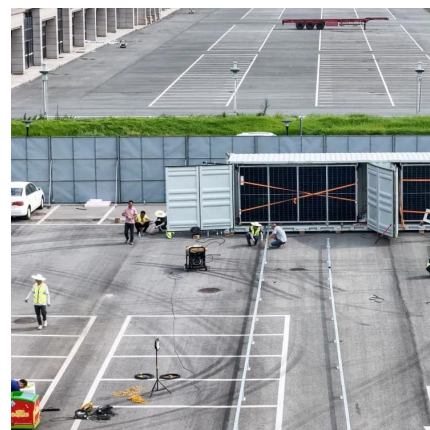
In the world of mobile telecommunications, understanding the Base Station Subsystem (BSS) is paramount for grasping how our everyday communications function ...

[Request Quote](#)

What Is A Base Station Antenna

base station antenna is a crucial component of wireless communication networks, primarily used to facilitate the transmission and ...

[Request Quote](#)





[What is Telecommunication Base Station , China Hop](#)

What is telecommunication base station, let's learn about communication base stations. China telecom equipment supplier.

[Request Quote](#)

[Choosing the Optimal Channels for Base Stations: A ...](#)

In typical scenarios, base stations operate within certain frequency bands, which are regulated to minimize interference and maintain quality of service. These bands can vary ...

[Request Quote](#)



[Chapter 5 EMS Communications Flashcards , Quizlet](#)

Study with Quizlet and memorize flashcards containing terms like base station, biotelemetry, cellular telephones and more.

[Request Quote](#)



Contact Us

For catalog requests, pricing, or partnerships, please visit:
<https://espaciovet.es>