

Which side of the solar panel is used





Overview

The side of the solar cell that is facing up is the one that features the photovoltaic (PV) cells, designed to capture sunlight and convert it into electricity. Which direction should solar panels be placed?

In the northern hemisphere, the general rule for solar panel placement is, solar panels should face true south (and in the southern, true north). Usually this is the best direction because solar panels will receive direct light throughout the day. However there is a difference between magnetic south and true south that must be considered.

Which hemisphere should solar panels be placed in?

The general rule for solar panel placement in the northern hemisphere is that solar panels should face true south (and in the southern, true north). This is usually the best direction because solar panels will receive direct light throughout the day.

Do solar panels follow the Sun?

Some solar arrays follow the Sun using solar tracking systems which significantly increase energy production. The following sections refer only to 'fixed' or non-tracking systems. In the northern hemisphere, the general rule for solar panel placement is, solar panels should face true south (and in the southern, true north).

Which side of a solar panel produces the most electricity?

North Orientation: Panels that face north produce the most electricity overall and can be the best choice for people who are at home during the day. Not only are they there to use electricity when it's produced it's also easy for them to shift demand by using washing machines, clothes dryers, pool filters and other devices in the middle of the day.

What is solar panel orientation?



Solar panel orientation refers to the placement, direction, and angle of solar panels, specifying the cardinal direction the panel faces, which helps it receive direct sunlight throughout the day. The cardinal directions are the north, south, east, or west, and they depend on your location and the path of the sun.

Can solar panels be placed in multiple directions?

Combining Directions: Panels can be placed in multiple directions other than just an east/west split. For example, some solar panels could be placed facing north and some facing west. This will result in an output similar to north-west facing panels. But you're not limited to just two directions.



Which side of the solar panel is used



[Solar Backsheet & PV Backsheet Manufacturer , Dunmore](#)

Solar Module Components There are many solar technologies available and accordingly different types of modules. The above illustration is a representation of solar panel materials used in a ...

[Request Quote](#)

[Solar Panel Placement: Best Direction & Orientation Guide](#)

For homeowners in the northern hemisphere, south-facing panels are ideal. Since the sun travels across the southern half of the sky, this direction ensures maximum exposure throughout the ...

[Request Quote](#)



[Which side of the solar cell is the front? , NenPower](#)

In solar cells, the front side is commonly recognized as the side that faces the sun, characterized by a layer of transparent material that allows ...

[Request Quote](#)

[Which direction must solar panels face, and what ...](#)

To understand the answer, think of a building in the northern hemisphere. The north side of the



building is always in the shade. In the ...

[Request Quote](#)



[PV Interconnection: Load-Side vs. Line-Side](#)

Adding a sub panel and pulling the house breaker off the sub panel but also using that subpanel as the interconnection point of the solar breaker? It was explained to me that this would ...

[Request Quote](#)



[Don't Let Your Solar Panels Down: The Ultimate ...](#)

Explore the essential guide to different types of clamps used in solar plants for panel mounting. Learn about U mid clamps, Z end clamps, anti ...

[Request Quote](#)



The Basics of Line-Side Tap Solar

In the case of line-side tap solar, the key component stars are the solar panels, inverter, and utility meter. Our good ol' friend, the solar panel (we know him ...

[Request Quote](#)





[Solar Panel Direction & Orientation: 2025 Complete Guide](#)

Solar panels should face true south, not magnetic south. The difference between these directions, called magnetic declination, can vary by up to 30 degrees depending on your ...

[Request Quote](#)



[The Pros and Cons of Bifacial Solar Panels](#)

With traditional solar panels, only one side of the panel is exposed to sunlight, while the other side remains unused. In contrast, bifacial solar panels can ...

[Request Quote](#)

[What Side of House is Best for Solar Panels \(Solar ...](#)

The best side of the house for solar panels is the side that gets the most sun exposure throughout the day. While there are many factors to ...

[Request Quote](#)



Solar panel orientation

In the northern hemisphere, the general rule for solar panel placement is, solar panels should face true south (and in the southern, true north). Usually this is the best direction because solar ...

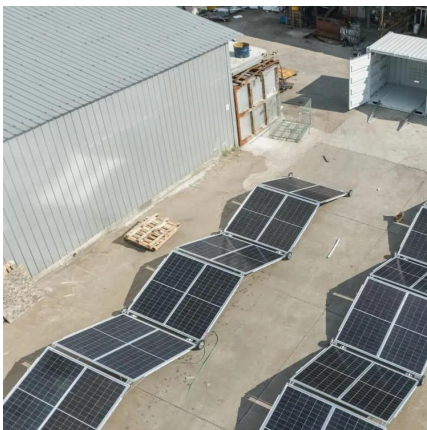
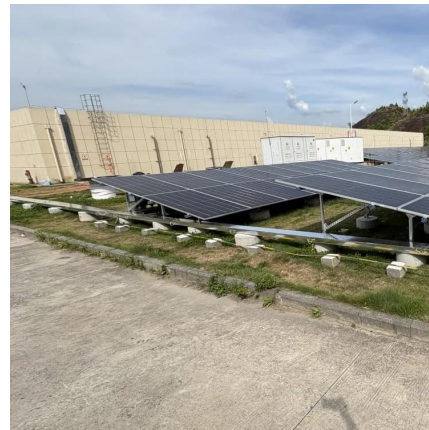
[Request Quote](#)



How Do Bifacial Solar Panels Work , Dual-Sided ...

Bifacial panels are ideal for environments with high reflectivity, such as snow, sand, or light-coloured rooftops. Understanding Bifacial Solar ...

[Request Quote](#)



Solar panel inclination angle, location and orientation

To take maximum advantage of solar radiation, it is advisable to orient the solar panels towards the south if we are in the northern hemisphere and the north if we are in the ...

[Request Quote](#)

Which side of the solar cell is facing up? , NenPower

The side of the solar cell that is facing up is the one that features the photovoltaic (PV) cells, designed to capture sunlight and convert it into electricity.

[Request Quote](#)





[2022 Starcraft Super Lite 252RB camper trailer, VIN: ...](#)

2022 Starcraft Super Lite 252RB camper trailer, VIN: 1SABS0BP3N3YN5112, Maxx Air 2 vent covers installed, solar charger in storage compartment, built-in solar panel connection on roof, ...

[Request Quote](#)

[Which Solar Panel Direction \(Orientation\) Is Best?](#)

In the northern hemisphere, the general rule for solar panel placement is, solar panels should face true south (and in the southern, true north). Usually this is ...

[Request Quote](#)



[What Side of House is Best for Solar Panels \(Solar Panel ...](#)

The best side of the house for solar panels is the side that gets the most sun exposure throughout the day. While there are many factors to consider when determining the ...

[Request Quote](#)

[The Rise of Bifacial Solar Panels: Harnessing Energy ...](#)

Front-Side Absorption: The front side of the panel works just like a traditional solar panel, absorbing direct sunlight and converting it into electrical energy. Rear ...

[Request Quote](#)



[Solar Panel Orientation: Everything You Need to Know](#)

Proper solar panel orientation simply means that your solar panels are south-facing if you are in the northern hemisphere and north-facing if you are in the southern ...

[Request Quote](#)



[Which Solar Panel Direction \(Orientation\) Is Best?](#)

Discover which way your solar panels should face for maximum power. Expert advice on which solar module directions work, the orientations that don't and the impact on ...

[Request Quote](#)



[How to dismantle the side of solar panel , NenPower](#)

Dismantling the side of a solar panel requires careful consideration and methodical steps to ensure safety and the preservation of components. The essential aspects of this ...

[Request Quote](#)





Which side of the solar cell is facing up? , NenPower

1. The side of the solar cell that is facing up is the one that features the photovoltaic (PV) cells, designed to capture sunlight and convert it into ...

[Request Quote](#)



Which direction must solar panels face, and what angle should

To understand the answer, think of a building in the northern hemisphere. The north side of the building is always in the shade. In the morning the west is shaded, and the east is ...

[Request Quote](#)

Solar Panel Placement: Best Direction & Orientation ...

For homeowners in the northern hemisphere, south-facing panels are ideal. Since the sun travels across the southern half of the sky, this direction ensures ...

[Request Quote](#)



Bifacial solar panels: explained [UK, 2025]

What are bifacial solar panels? Bifacial solar panels use both sides to absorb light and produce electricity. This gives them an edge over regular models, known as monofacial ...

[Request Quote](#)



[Best Direction for Solar Panels , Trinity Solar](#)

Find out which direction solar panels should face for maximum sunlight and energy savings. Learn how roof angle and orientation impact solar efficiency.

[Request Quote](#)



[Bifacial Solar Panels: Dual-Sided Sustainability](#)

This article explores bifacial solar panels-- how they work, why they are important to solar growth, and applications benefiting most from their installation.

[Request Quote](#)

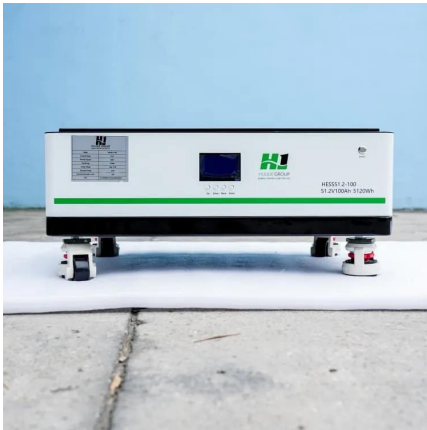


[Solar panel inclination angle, location and orientation](#)

To take maximum advantage of solar radiation, it is advisable to orient the solar panels towards the south if we are in the northern hemisphere ...

[Request Quote](#)





[Does Solar Have a Dark Side? Solar impacts on rural ...](#)

As the push for clean energy clashes with the preservation of generational farmland, a farmer's struggle unfolds, revealing possible ...

[Request Quote](#)

Contact Us

For catalog requests, pricing, or partnerships, please visit:
<https://espaciovet.es>